



Norfolk Police Department Core Services

Senior Assistant Chief
Sharon Chamberlin

Norfolk Police Department Staffing

Rank Structure

	Chief of Police
	Senior Assistant Chief
	Assistant Chief (3)
	Captain (12)
	Lieutenant (25)
	Sergeant (106)
	Officer

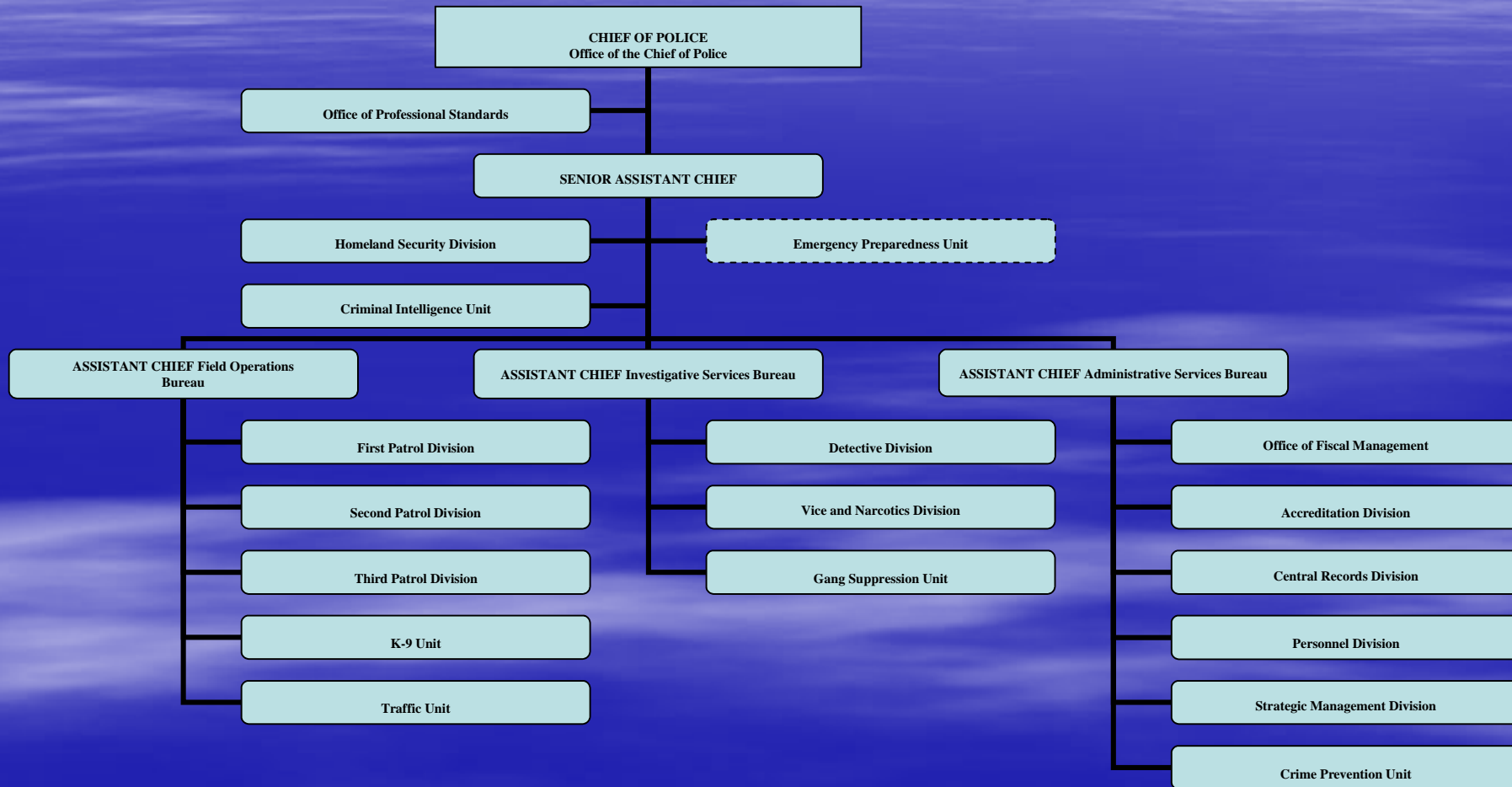
Compliment

772 Sworn

124 Civilian Employees

- Operations Officers
- Humane Officers
- Administrative Personnel

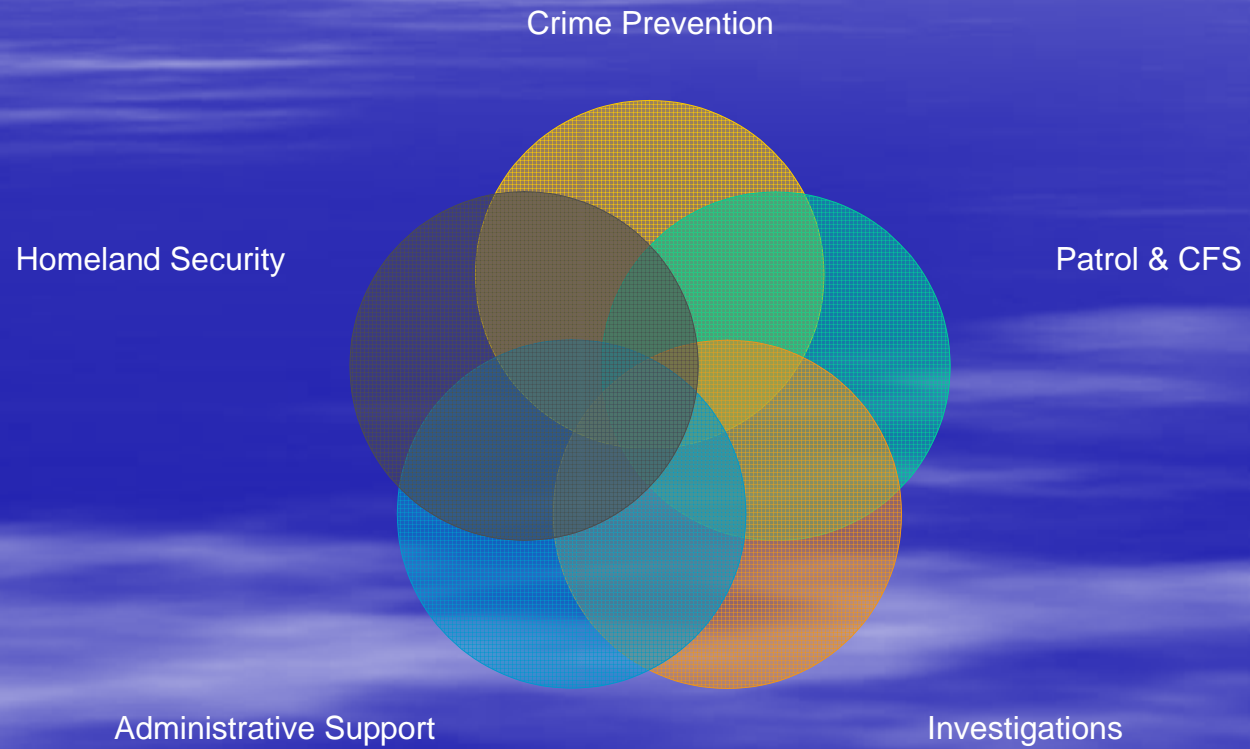
Norfolk Police Department



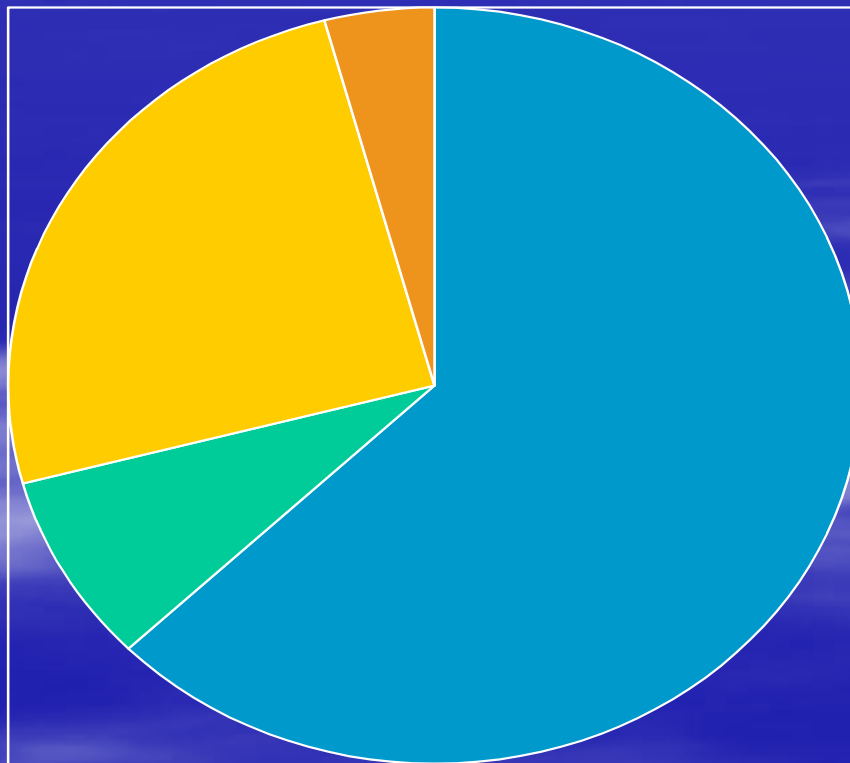
Core Services

- Crime Prevention (#1)
- Patrol and Response to Calls for Service
- Criminal Investigations
- Homeland Security
- Administrative Support

Core Services Interaction

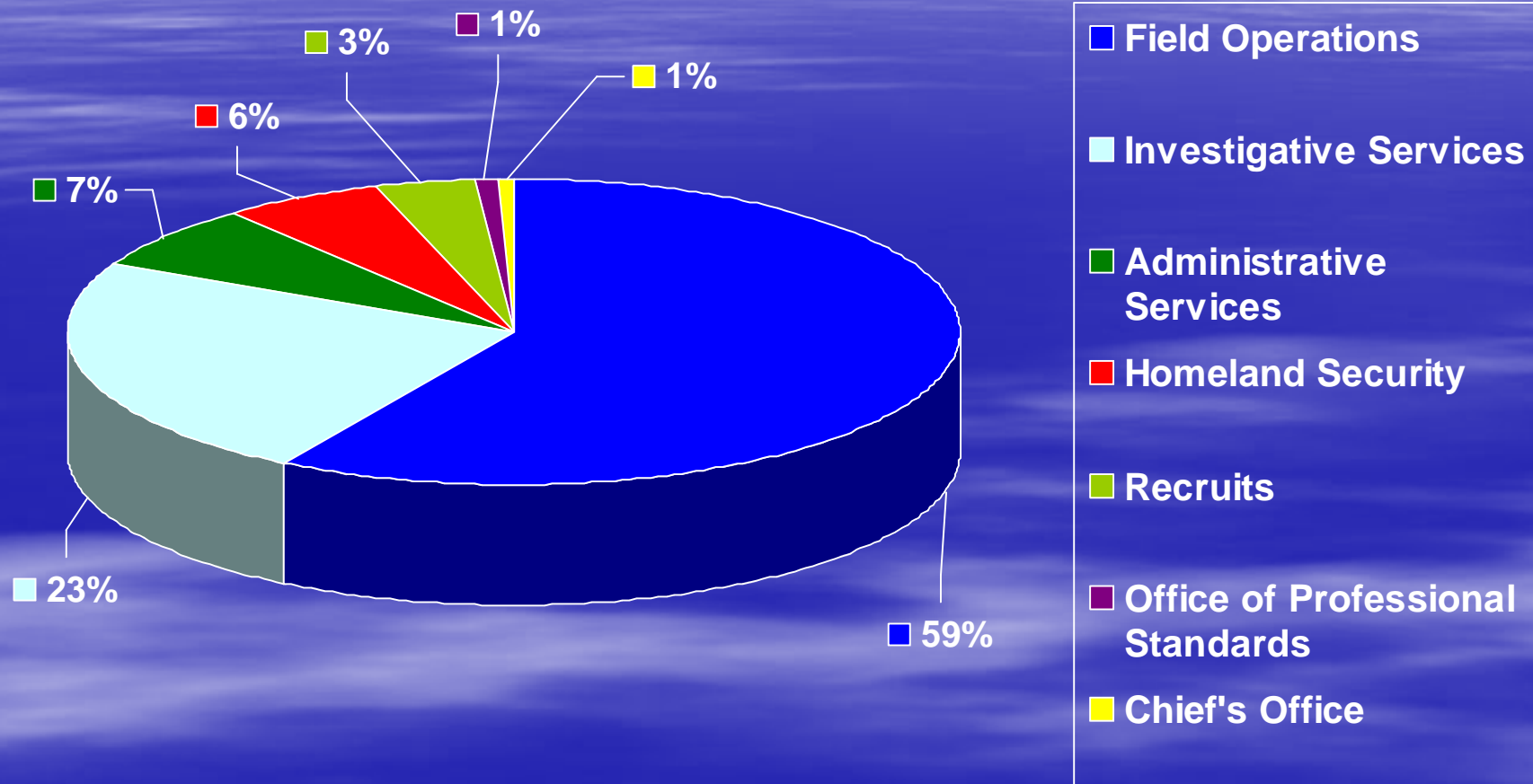


Breakdown by Number of Officers per Core Service



- **Field Operations (448)**
- **Administrative Services (58)**
- **Investigative Services (178)**
- **Homeland Security (30)**

Overview of the Department: Sworn Personnel Assignments



FY09 Operating Budget

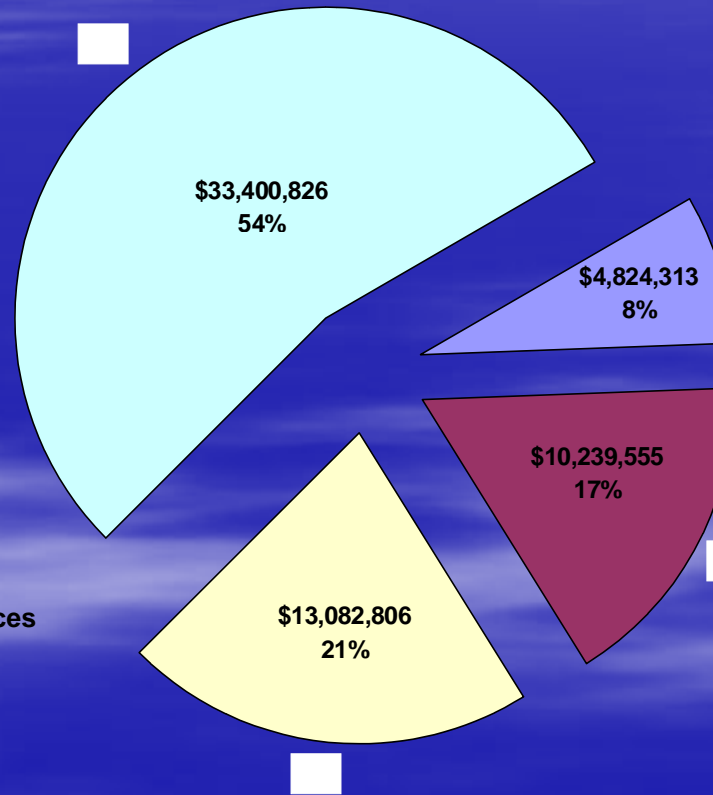
TOTAL BUDGET
\$61,547,500

Field Operations

- First Patrol
Red, Blue, Gold, & Green
Sectors
- Second Patrol
Red, Blue, & Gold
Sectors
- Third Patrol
Red, Blue, & Gold
Sectors
- Traffic
K-9
- Animal Protection

Investigative Services

- Detective
- Vice and Narcotics
- Crime Analysis



Police Administration

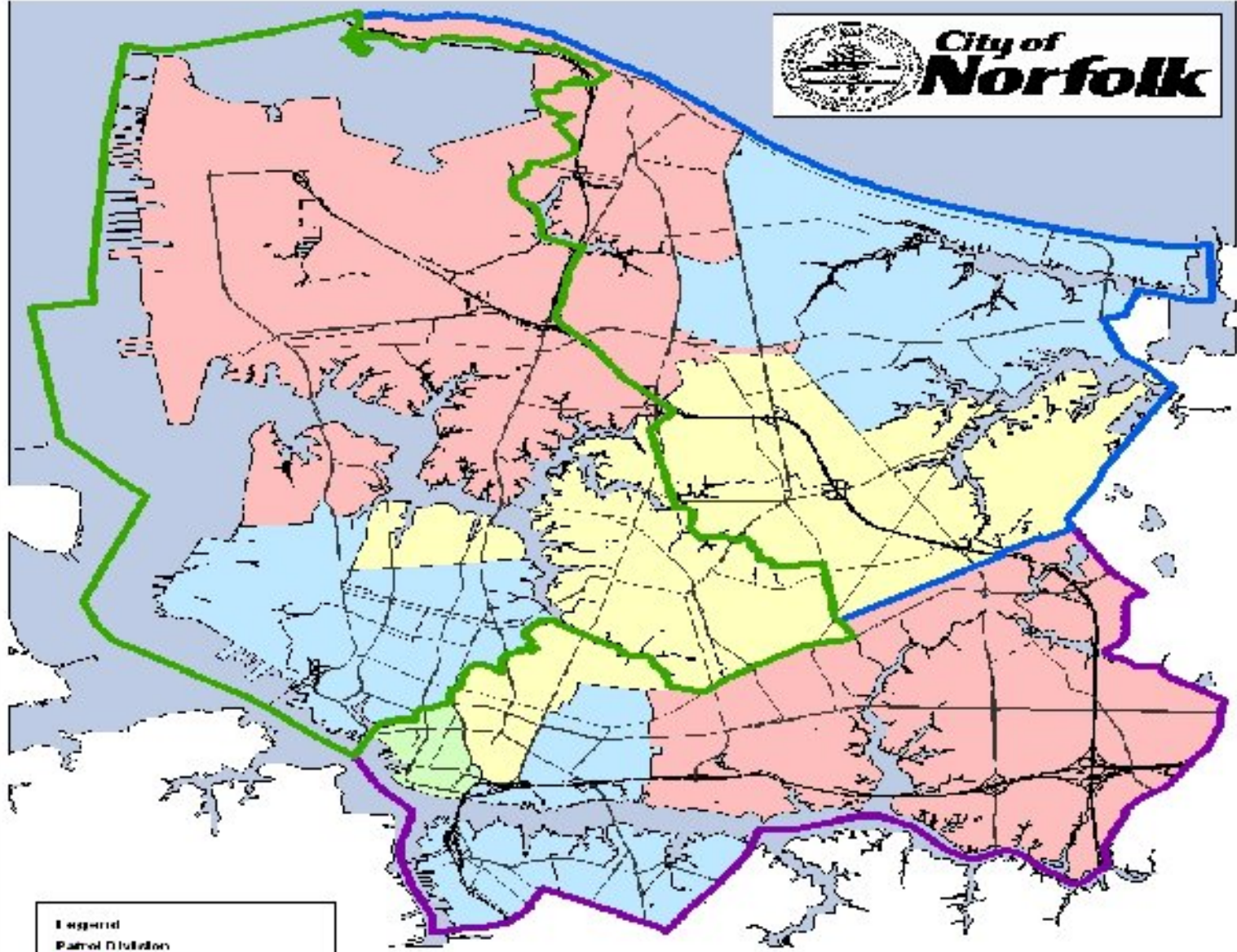
- Chief's Office
- Professional Standards
- Criminal Intelligence
- Homeland Security

Administrative Services

- Training
- Fiscal Management
- Accreditation
- Inspections
- Personnel
- Strategic Management
- Central Records
- Property & Evidence
- Crime Prevention

Response to Calls for Service/Crime Prevention and Patrol

- The Norfolk Police Department is organized into 3 patrol divisions - geographic
- Approximately half of all sworn officers are assigned to this core service
- Officers respond to emergency calls for service and patrol neighborhoods
- Patrol officers are encouraged to meet residents of their neighborhoods and use problem solving skills to remedy problems and concerns



Legend

Patrol Division

- 1
- 2
- 3

Street Classification Major Roads

CLASS

- 1
- 2
- 3

This map is for informational purposes. It is not intended to be used as a legal document. The City of Norfolk is not responsible for any errors or omissions. The map is based on aerial photography and is not a survey. The City of Norfolk is not responsible for any errors or omissions. The map is based on aerial photography and is not a survey.

0 2,000 4,000 8,000 14,000 20,000 Feet



Investigations

- Investigative Commands
 - Detective Division
 - Vice and Narcotics Division
 - Gang Suppression Unit
 - Established January 2009 by Chief Marquis
 - Staffed with a lieutenant, 2 sergeants and 12 investigators
 - Responsible for gang intelligence, monitoring and suppression in the City of Norfolk
 - Partnering with the FBI, BATFE, US Attorney and Commonwealth's Attorney

Detective Division

- Crimes Against the Person
 - Homicide
 - Robbery
 - Sexual Assault/Family Violence
- Crimes Against Property
 - Burglary
 - Auto
 - General Assignment
 - Train New Detectives
 - Larceny and General Investigations
 - Assist Squads with Interviews, Canvases, and Follow-up

Detective Division

- Although broken up into sections to enhance investigator expertise, teamwork is stressed to ensure that crime victims receive a high level of service from the Police Department.

Vice and Narcotics

- Responsible for investigating all narcotic related offenses city-wide
- Focus of investigations include:
 - Street level narcotic sellers/users
 - Mid- and upper-level narcotic suppliers
 - Prostitution and related offenses

Homeland Security

- The Homeland Security Division consists of three sections
 - Special Operations Team (SWAT)
 - Harbor Patrol
 - Bomb Squad

Special Operations Team

- Contains specialized equipment and expertise to handle emergency tactical situations
- Conducts threat assessments for facilities and infrastructure
- Conducts planning and preparations for emergencies to include terrorism and natural disasters

Harbor Patrol

- Maintains a presence on the extensive waterways of the City of Norfolk
- Contains the scuba diving recovery team
- Collaborates with several local, state and federal agencies to ensure water safety
- Assists in terrorism prevention

Administrative Support

- Responsible for providing resources to other commands to better serve the citizens of Norfolk, includes:
 - The Personnel and Training Division
 - Hires and trains (24 week academy) new personnel
 - Conducts required In-service Training
 - Oversees Specialized Training
 - The Strategic Management Division
 - Responsible for development, preparation and legislation of policy, procedures and orders
 - The Central Records Division
 - Stores and maintains the department's records including criminal
 - Coordinates information technology needs

Administrative Support

– The Accreditation Division

- 2008 Norfolk Police Department became state accredited
- 2009 Begin national accreditation process

– The Crime Prevention Unit

- Provides victim-avoidance information, lectures and demonstrations
- Coordinates community activities including National Night Out, Crime Prevention Awards and Police Athletic League (PAL)

Conclusion

- Our mission is to “*The Norfolk Police Department shall provide protection and police service responsive to the needs of the people in Norfolk*”
- We accomplish our mission through community input and partnerships with all stakeholders in the City of Norfolk.