

## 10 more ways to help prevent graffiti

1. Get educated. Learn about graffiti, how it impacts your community, and who is responsible for graffiti prevention and clean-up in your area.
2. Report graffiti to the appropriate authorities, In Norfolk, VA call 757-664-6510.
3. Organize a paint-out or graffiti clean-up in your neighborhood. Local paint dealers are often willing to donate paint and brushes to volunteers for graffiti clean-up.
4. Find a local or state arts organization near you to identify a program or grant for a local arts project to address continuously tagged locations.
5. Coordinate a graffiti awareness campaign at your school or in the community.
6. Make a presentation on graffiti prevention to your school class or neighborhood group.
7. Adopt an area in your school or community and make sure it stays clean and free of graffiti.
8. Plant trees or other greenery near a graffiti-plagued wall.
9. Ask your community to install lighting in areas that are dark and often hit with graffiti.
10. Contact a local Keep America Beautiful affiliate and volunteer to help with neighborhood cleanup.



[www.norfolk.gov/neighborhoods](http://www.norfolk.gov/neighborhoods)

400 Granby Street  
Norfolk, VA 23510  
Phone: 757-664-6500  
E-mail: [CommunityOutreach@norfolk.gov](mailto:CommunityOutreach@norfolk.gov)

Department of  
Neighborhood Preservation  
*Bureau of Community Outreach*

## Graffiti Prevention and Removal Guide



*Prevent, Report, Remove Graffiti*

*Call 664-6510 to Report*



# Graffiti Prevention & Removal Guide

This guide is a summary of strategies for prevention and removal of graffiti. Additional tools, tips, techniques, as well as expert referrals can be obtained by contacting the Bureau of Community Outreach.

Prevent	Report	Remove
---------	--------	--------

At chronically tagged sites, Crime Prevention Through Environmental Design or CPTED, is a cost-effective alternative. The basic principle behind CPTED focuses on prevention.

Communities can engage in cleanup programs to remove trash or graffiti; participating in programs that improve the appearance, safety and use of public spaces; conducting their own patrols to identify neighborhood problems by joining an organized neighborhood watch program.



Clematis are among the most decorative of the flowering vines. There is great variety in flower form, color, bloom season, foliage effect and plant height.

Furthermore, to control access to sites by:

- Incorporating shrubs, thorny plants, and vines to restrict vandal access
- Using fences, controlled entrance and exits, rails, and other barriers
- Limiting access to roofs by moving dumpsters away from walls and covering drainpipes

Or increasing security by:

- Adding or improving lighting for natural surveillance
- Installing security cameras
- Organizing a Neighborhood/Business Watch

*Removing graffiti promptly can significantly reduce reoccurrence.*

Notify the authorities. A reward of up to \$500 may be available to persons providing information leading to a conviction of a graffiti vandal.

Identify location—when reporting an incident please provide a specific address or location.

Photograph (digital if available) the graffiti to assist law enforcement in their investigation.

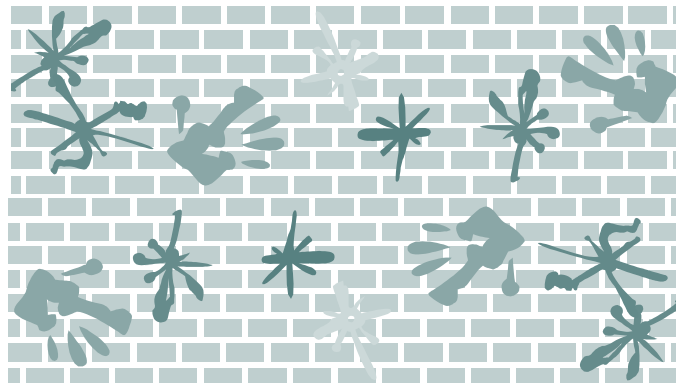
### TO REPORT GRAFFITI

Graffiti in Progress: call 911

Reporting: call 757-664-6510 or on-line at [www.norfolk.gov/311CallCenter/default.asp](http://www.norfolk.gov/311CallCenter/default.asp)

For more information about the city's TAG-OUT Graffiti Abatement Pilot Program contact:

City of Norfolk  
 Department of Neighborhood Preservation  
 Bureau of Community Outreach  
 Email: [CommunityOutreach@norfolk.gov](mailto:CommunityOutreach@norfolk.gov)  
 Phone: 757-664-6500  
 or visit:  
[www.norfolk.gov/neighborhoods/tagout.asp](http://www.norfolk.gov/neighborhoods/tagout.asp)



Removal within 24 to 48 hours significantly reduces the chance of reoccurrence.

Paint Over Graffiti—keep storm water in mind, to avoid polluting water supply

- color match paint and surface, a patchwork of different colors can invite graffiti.
- Choose low/no VOC paint—avoid volatile organic compounds (VOCs), which can irritate the eyes, nose, throat, and skin.
- Use recycled paint when available

Power Washing to Remove Graffiti

Power washing by itself, or with a cleaning solvent, works well on porous surfaces. Try adding an abrasive such as baking soda to the water to remove a thin layer of the surface, and with it, the graffiti.

Removing Sticker Graffiti

Using a dull blade, scraper, or putty knife can be an easy to remove stickers without using chemicals

Using Chemicals/Solvents

- Choose safer products—many graffiti remover products contain ingredients that are toxic, some of which are known carcinogens.
- Wear protective gear—make sure to check the Safety Data Sheet (MSDS) for proper use, storage, and disposal information.

Here is a list of cleaning products that listed by different type of surface:

Glass, Metal, Tile, etc. Motsenbockers Lift Off MSC-1 Mineral Spirits E-Z Graffiti Wipes Expunge-Gel Graffiti & Vandal Mark Remover Baking Soda (applied with a pressure washer)	Plastic, Vinyl, etc. Motsenbockers Lift Off MSC-1 E-Z Graffiti Wipes Baking Soda (applied with a pressure washer) Brick, Concrete, Asphalt, etc. Baking Soda (applied with a pressure washer) Motsenbockers Lift Off MSC-1
---	--