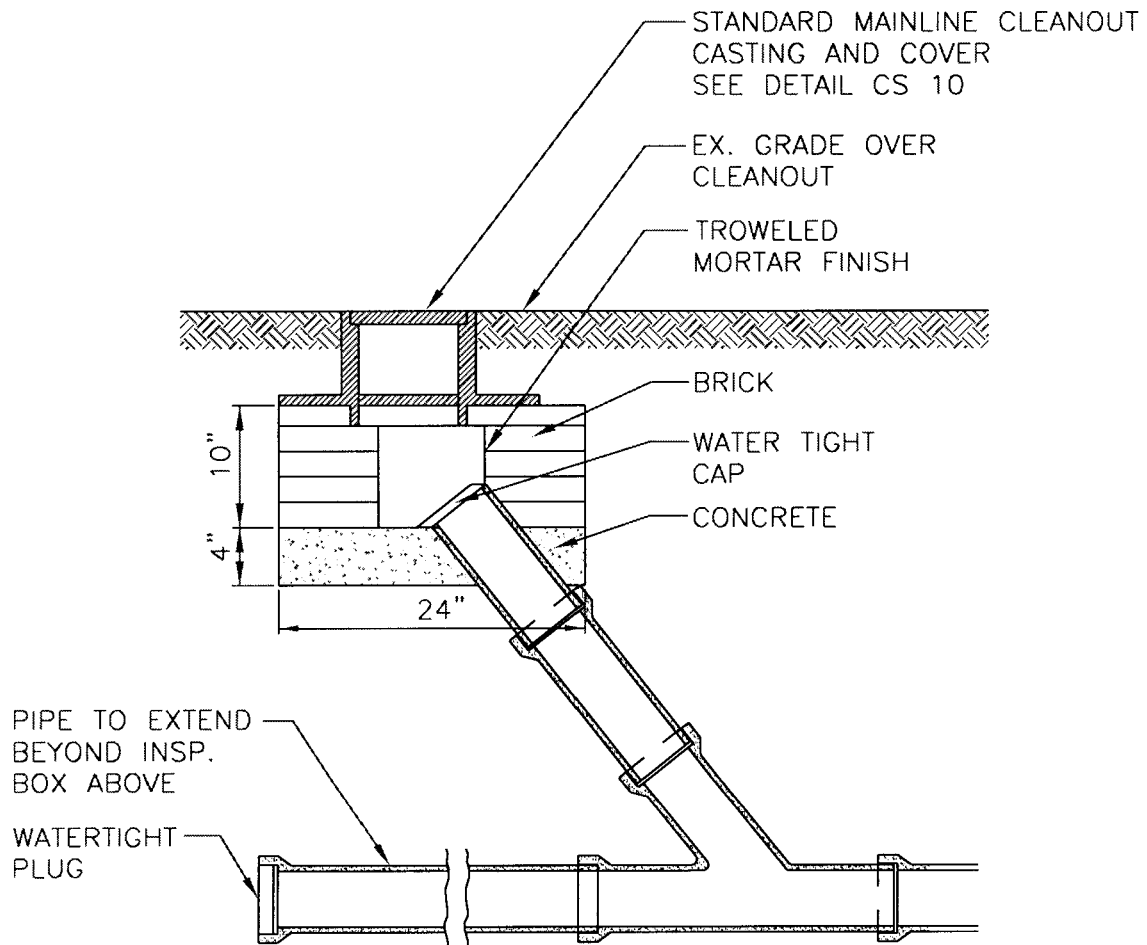


NOTE:

1. CAST IRON TOPS & FRAMES SHALL BE SUFFICIENTLY TRUE TO A PLANE SURFACE, SO THAT TOPS WILL NOT ROCK.
2. RISER MATERIAL TO MATCH MAIN MATERIAL.

GENERAL SPECIFICATIONS:

1. CAST IRON FRAME AND COVER SHALL BE 35,000 PSI. ASTM A48



CITY OF NORFOLK – DEPARTMENT OF UTILITIES
STANDARD DETAILS

SCALE:
NOT TO SCALE

STANDARD MAINLINE CLEANOUT CONNECTION

DRAWING NO.
CS 09

DATE: 03/07