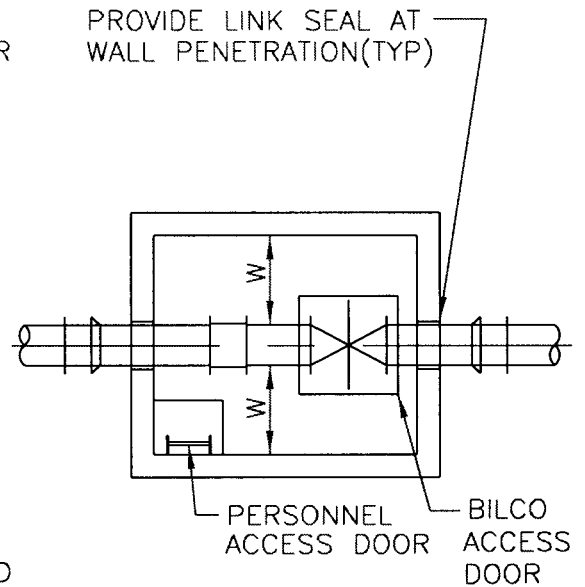


VAULT SECTION



VAULT PLAN

NOTES:

1. PRECAST UNITS SHALL BE DESIGNED BY A PROFESSIONAL ENGINEER PRACTICING IN THE COMMONWEALTH OF VIRGINIA.
2. PROVIDE CONCRETE WITH A MINIMUM F'C= 5000psi @ 28 DAYS
3. VAULTS SHALL BE DESIGNED FOR H2O LOADING + 1'-0" EARTH COVER + 35' IMPACT
4. "L" SHALL BE 6' FOR 12" PIPE AND SMALLER AND 8' FOR LARGER PIPE.
5. "W" SHALL BE A MINIMUM OF 2' FROM OUTSIDE DIAMETER OF VALVE OR OPERATING NUT TO VAULT WALL.
6. ACCESS DOOR SHALL BE SIZED TO ALLOW EASY ACCESS TO THE GATE VALVE OPERATING NUT. CONFIGURATION OF THE VALVE AND LOCATION OF THE HATCH VARIES DEPENDING ON SIZE AND ORIENTATION OF THE GATE VALVE.

CITY OF NORFOLK – DEPARTMENT OF UTILITIES
STANDARD DETAILS

SCALE:
NOT TO SCALE

PRECAST CONCRETE VALVE VAULT

DRAWING NO.
CS 15

DATE: 03/07