

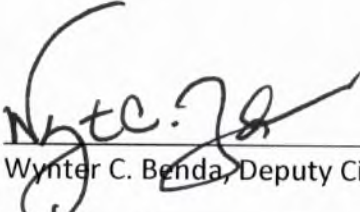


To the Honorable Council
City of Norfolk, Virginia

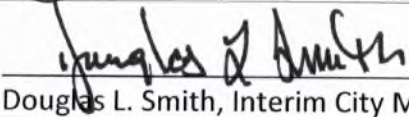
June 13, 2017

From: Darrell R. Crittendon, Director
Recreation, Parks and Open Space

Subject: Amend and reordain the Norfolk City Code so as to add one new section, numbered 12-141.7, relating to the creation of 219 graves in the re-subdivision of section 10-A in Calvary Cemetery Annex

Reviewed: 
Wynter C. Benda, Deputy City Manager

Ward/Superward: 3/7

Approved: 
Douglas L. Smith, Interim City Manager

Item Number: R-03

- I. **Recommendation:** Adopt Ordinance
- II. **Applicant:** City of Norfolk
Department of Recreation, Parks & Open Space
- III. **Description:**
This agenda item is to amend and reordain the *Norfolk City Code, 1979*, so as to add one new section, numbered 12-141.7, creating a new subdivision named Section 10-A, in a portion north of existing block 10, in the Calvary Cemetery Annex.
- IV. **Analysis**
There are 37 available adult sites in the grave inventory at Calvary Cemetery. By establishing Section 10-A, 219 grave sites will be added to provide inventory for approximately three years, depending on the demand. Section 10-A is designated for single or companion graves, with upright monuments, and is configured in the traditional east-west layout. The development of Section 10-A is consistent with our Cemetery Master Plan which guides cemetery development. A paved road was removed to prepare for development of the Cemetery.
- V. **Financial Impact**
Prices for graves in Section 10-A will be \$1,200 per grave. Pricing is consistent with similar inventory throughout the cemetery system.

VI. Environmental

N/A

VII. Community Outreach/Notification

Public notification for this agenda item was conducted through the City of Norfolk's agenda notification process.

VIII. Board/Commission Action

N/A

IX. Coordination/Outreach

This letter has been coordinated with the Department of Recreation, Parks and Open Space, the Department of Public Works, Division of Surveys, and the City Attorney's Office.

Supporting Material from the Department of Recreation, Parks and Open Space:

- Ordinance
- Survey plat of Section 10-A
- Overall Map of Calvary Cemetery

Form and Correctness Approved

RAV

Contents Approved:

By *Nathaniel Seaman*
Office of the City Attorney

By *[Signature]*
DEPT. Recreation, Parks and Open Space

NORFOLK, VIRGINIA

ORDINANCE No.

AN ORDINANCE TO AMEND AND REORDAIN THE NORFOLK CITY CODE, 1979, SO AS TO ADD ONE NEW SECTION, NUMBERED 12-141.7, RELATING TO THE CREATION OF 219 GRAVES IN THE RE-SUBDIVISION OF SECTION 10-A, IN A PORTION NORTH OF EXISTING BLOCK 10, CALVARY CEMETERY ANNEX.

- - -

BE IT ORDAINED by the Council of the City of Norfolk:

Section 1:- That the Norfolk City Code, 1979, is hereby amended and reordained by adding one new section relating to the creation of 219 graves in the re-subdivision of Section 10-A, in a portion north of existing block 10, Calvary Cemetery Annex, such section numbered and reading as follows:

Sec. 12-141.7. Section 10-A, Subdivision of Portion of Calvary Cemetery Annex.

The re-subdivision of the area, as shown on the plat entitled "Section 10-A Subdivision Of Portion Of Calvary Cemetery Annex North of Block 10 Norfolk, Virginia," showing new graves in Section 10-A dated April 7, 2017, prepared by the Division of Surveys, Department of Public Works, is hereby approved.

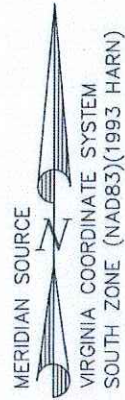
Section 2:- That this ordinance shall be in effect from and after its adoption.



CALVARY CEMETERY

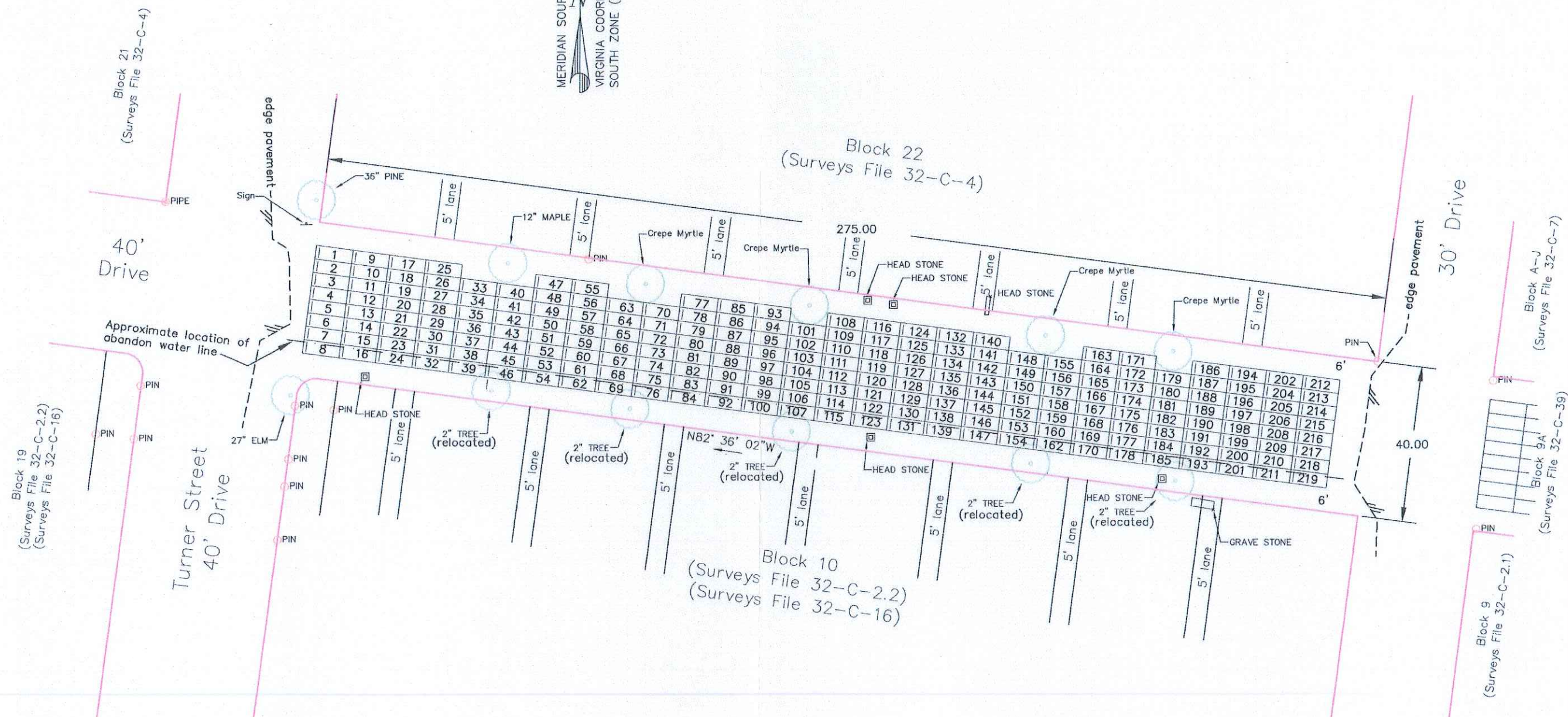
GENERAL NOTES

1. THE MERIDIAN SOURCE AND COORDINATES SHOWN HEREON ARE BASED ON THE VIRGINIA COORDINATE SYSTEM OF 1983, SOUTH ZONE (NAD83)(1993 HARN).
2. ALL GRAVES MEASURE 9.5' X 3.5'.



LEGEND

- ASPHALT
- BOUNDARY LINE
- PIN (FOUND)
- PIPE (FOUND)
- TREE (AS DESCRIBED)



[Signature]
 DIRECTOR OF RECREATION, PARKS AND OPEN SPACE
 DATE 4/21/17

[Signature]
 DIRECTOR OF PUBLIC WORKS
 DATE 4/21/17

SECTION 10-A
 A SUBDIVISION OF A PORTION OF CALVARY
 CEMETERY ANNEX BETWEEN BLOCKS 10 & 22
 NORFOLK, VIRGINIA SHEET 1 OF 1

20 0 20 40

DRAWING SCALE 1"=20' 170207

DATE	SCALE	DRAWN BY	CHECKED BY
04/10/2017	1"=20'	RM/KCM	KCM

DIVISION OF SURVEYS
 DEPARTMENT OF PUBLIC WORKS
 NORFOLK, VIRGINIA