

S.O.A.R AFTER SCHOOL PROGRAM

SOAR is an after-school program designed to provide a safe and fun recreational environment for youth in grades K-8. Participants will engage in activities that are both interactive and fun.



2025-26

PARENT HANDBOOK

TABLE OF CONTENTS

- 1 WELCOME
- 2 PROGRAM OVERVIEW
- 3 LOCATIONS
- 4 TRANSPORTATIONS
- 5 PROGRAM FEES AND PAYMENTS
- 6 REGISTRATION AND WITHDRAWAL
- 6 REFUND POLICY
- 7 SIGN OUT CHILD PROCEDURES
- 7 STRANDED PARTICIPANTS
- 8 FOOD/SNACKS
- 8 FIELD TRIPS
- 9 INCLUSION, ACCOMMODATION AND SPECIAL NEEDS
- 9 ILLNESS AND MEDICATION
- 10 ACCIDENT AND INCIDENT REPORTS
- 10 INCLEMENT WEATHER
- 11 CELL PHONE AND ELECTRONICS
- 11 OPERATIONAL GUIDELINES
- 12 CODE OF CONDUCT
- 13 BULLYING
- 13 BEHAVIORAL DEVELOPMENT PLAN
- 14 IMPORTANT DATES





WELCOME

DEAR PARENTS AND GUARDIANS,

WELCOME TO AN EXCITING NEW SEASON OF DISCOVERY, GROWTH, AND FUN! I AM THRILLED TO SERVE AS ACTING DIRECTOR AND EVEN MORE EXCITED THAT YOU HAVE CHOSEN TO JOIN US FOR THIS YEAR'S AFTER-SCHOOL PROGRAM. OUR TEAM HAS POURED PASSION AND PURPOSE INTO CREATING AN ENVIRONMENT WHERE YOUR CHILD WILL FEEL SAFE, INSPIRED, AND SUPPORTED. WHETHER THEY ARE EXPLORING NEW SKILLS, BUILDING FRIENDSHIPS, OR DISCOVERING NEW INTERESTS, EACH DAY WILL OFFER THEM SOMETHING MEANINGFUL TO TAKE HOME: A SPARK OF KNOWLEDGE, A BURST OF CONFIDENCE, OR A NEW PERSPECTIVE.

THANK YOU FOR TRUSTING US WITH THIS PART OF YOUR CHILD'S JOURNEY. WE ARE HONORED TO WALK ALONGSIDE YOU AND LOOK FORWARD TO SEEING WHAT THIS SCHOOL YEAR BRINGS! LET US MAKE IT A GREAT ONE, WHERE EVERY AFTERNOON BECOMES AN ADVENTURE AS WE BUILD BRIGHT SMILES AND EVEN BRIGHTER FUTURES TOGETHER.

SINCERELY,

EDWARD MATTHEWS
ACTING DIRECTOR
NORFOLK PARKS AND RECREATION

PROGRAM OVERVIEW

THE INFORMATION IN THIS HANDBOOK HAS BEEN PREPARED TO ANSWER QUESTIONS YOU MAY HAVE CONCERNING THE SOAR AFTER-SCHOOL PROGRAM. PLEASE KEEP IT THROUGHOUT THE TIME YOUR CHILD IS REGISTERED SO THAT YOU CAN REFER TO IT AS NEEDED. IF YOU HAVE ANY QUESTIONS CONCERNING AFTER-SCHOOL CARE THAT ARE NOT COVERED IN THE HANDBOOK, PLEASE FEEL FREE TO EMAIL US AT PARKSRECEVENTS@NORFOLK.GOV

THE MISSION OF SOAR (SCHOOLS OUT AFTERNOON RECREATION) PROGRAM IS TO PROVIDE A SAFE AND FUN RECREATIONAL PROGRAM FOR YOUTH IN GRADES K-8. PARTICIPANTS WILL ENGAGE IN ACTIVITIES THAT ARE BOTH INTERACTIVE AND FUN. THE PROGRAM OPERATES FROM SCHOOL DISMISSAL UNTIL 6:00P.M. MONDAY THROUGH FRIDAY, EXCEPT OFFICIAL CITY OF NORFOLK HOLIDAYS, OFFICIAL NPS HOLIDAYS, AND CERTAIN SCHOOL CLOSURES (SEE PAGE 12). BELOW IS A LIST OF EACH RECREATION OR COMMUNITY CENTER WITH THE PARTICIPATING SCHOOLS ASSOCIATED WITH EACH FACILITY.



LOCATIONS

FACILITY	PARTICIPATING SCHOOLS
Bayview Recreation Center: 8613 Willow Terrace (757) 441-1626	*Bayview, Mary Calcott, Oceanair, Oceanview
Berkley Community Center: 121 W. Liberty Street (757) 441-1612	*St. Helena
Crossroads Community Center: 8019 Old Ocean View Road (757) 965-9430	*Crossroads
East Ocean View Community Center 9520 20th Bay Street (757) 441-1785	Little Creek
Fairlawn Community Center: 1014 Kempsville Road (757) 441-5670	Lake Taylor School
Huntersville Community Center: 830 Goff Street (757) 664-7434	Jacox, Lindenwood, P.B Young, Tidewater
Norview Community Center : 6380 Sewells Point Road (757) 441-1440	*Norview Elem, *Norview Middle
Sherwood Forest Community Center : 4537 Little John Drive (757) 441-5824	*Sherwood Forest
Tarrallton Community Center: 2100 Tarrallton Drive (757) 441-1765	*Tarrallton, Tanners Creek

*PARTICIPANTS FROM THESE SCHOOLS WILL BE ESCORTED TO THE FACILITY BY AN P & R STAFF.

TRANSPORTATION

NORFOLK PUBLIC SCHOOLS WILL PROVIDE TRANSPORTATION TO THE SOAR PROGRAM FOR STUDENTS THAT ATTEND THE FOLLOWING SCHOOLS. ATTENDANCE WILL BE TAKEN UPON ARRIVAL TO THE RECREATION OR COMMUNITY CENTER.

JAYCOX, OCEANVIEW
LAKE TAYLOR SCHOOL, P.B. YOUNG,
LINDENWOOD, SEWELLS POINT,
LITTLE CREEK, MARY CALCOTT,
TANNERS CREEK, OCEANAIR,
TIDEWATER PARK

P & R STAFF WILL BE RESPONSIBLE FOR PICKING UP PARTICIPANTS IN A DESIGNATED SPACE AT THE SCHOOLS LISTED BELOW. ATTENDANCE WILL BE TAKEN PRIOR TO LEAVING THE SCHOOL. PARTICIPANTS WILL BE ESCORTED BY P & R STAFF TO THE SOAR PROGRAM AT THE DESIGNATED RECREATION OR COMMUNITY CENTER.

BAYVIEW, ST. HELENA
CROSSROADS, SHERWOOD FOREST
NORVIEW ELEMENTARY, TARRALLTON,
NORVIEW MIDDLE



PROGRAM FEES AND PAYMENTS

COST OF THE PROGRAM \$80 PER MONTH PER CHILD FOR GRADES K - 5 AND \$40 PER MONTH PER CHILD FOR GRADES 6 - 8. FINANCIAL ASSISTANCE (POWER UP) IS AVAILABLE FOR FAMILIES WHO QUALIFY.

THE FIRST PAYMENT IS DUE AT THE TIME OF REGISTRATION. EACH PAYMENT THEREAFTER IS DUE ON OR BEFORE THE 25TH OF THE MONTH FOR THE UPCOMING MONTH. **IF PAYMENT IS NOT RECEIVED BY THE LAST DAY OF THE MONTH, YOUR CHILD WILL BE WITHDRAWN FROM THE PROGRAM AND WILL NOT BE PICKED UP ON THE FIRST DAY OF THE FOLLOWING MONTH.** NOTE: IF THERE IS A WAITING LIST FOR THE PROGRAM, YOU WILL BE PLACED AT THE END OF THE WAITING LIST AND CAN RE-REGISTER WHEN SPACE BECOMES AVAILABLE.

CREDIT OR DEBIT CARDS(MASTERCARD OR VISA ONLY), MONEY ORDERS, AND CHECKS MADE PAYABLE TO "CITY OF NORFOLK TREASURER" ARE ACCEPTABLE FORMS OF PAYMENT. CASH WILL NOT BE ACCEPTED. REFUNDS ARE NOT PROVIDED OR PRORATED FOR MISSED DAYS DUE TO VACATION, SUSPENSION FROM SCHOOL, ILLNESS, EARLY WITHDRAWAL, OR ANY OTHER REASON.

A \$35 SERVICE FEE IS CHARGED FOR EACH RETURNED CHECK. ANY CHECK RETURNED DUE TO INSUFFICIENT FUNDS NULLIFIES P & R PROGRAM PRIVILEGES. THE PAYEE AND/OR MEMBERS OF THE HOUSEHOLD ACCOUNT WILL NOT BE PERMITTED TO PARTICIPATE IN ANY PROGRAMS, ACTIVITIES OR UTILIZE FACILITIES UNTIL PAYMENT IS RECEIVED TO COVER THE FULL AMOUNT OF THE CHECK AND SERVICE FEE. ONCE NOTIFIED OF A RETURNED CHECK, RESTITUTION MUST BE MADE IN PERSON AT THE NORFOLK CITY TREASURER'S OFFICE, 810 UNION STREET. UNTIL SUCH RESTITUTION IS MADE, SERVICES WILL NOT BE PROVIDED. ONCE A RETURNED CHECK HAS BEEN RECEIVED, CHECKS WILL NOT BE ACCEPTED FOR THAT HOUSEHOLD FOR A THREE-YEAR PERIOD.

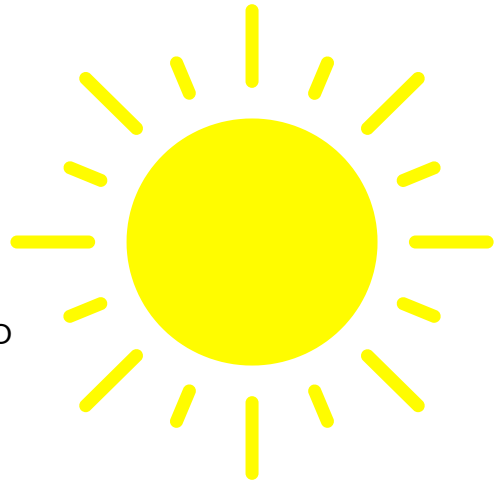
REGISTRATION & WITHDRAWAL

SOAR IS FOR YOUTH IN KINDERGARTEN, THROUGH 8TH GRADE. PARTICIPANTS MUST MEET THE AGE AND GRADE REQUIREMENT TO ENROLL. FALSIFICATION OF RECORDS WILL RESULT IN AUTOMATIC DISMISSAL FROM PROGRAM.

PAYMENT IS REQUIRED AT THE TIME OF REGISTRATION. PARENTS WILL BE REQUIRED TO COMPLETE REGISTRATION FORMS AND PAYMENTS PRIOR TO THE START OF THE PROGRAM.

PARENTS ARE REQUIRED TO UPDATE ANY CHANGES TO YOUR HOUSEHOLD AND NOTIFY STAFF OF WITHDRAWAL AT LEAST TWO WEEKS PRIOR TO THE LAST DAY OF THE ATTENDANCE.

NORFOLK PARKS AND RECREATION (NPR) DOES NOT PROVIDE A WRITTEN YEAR-END STATEMENT FOR CUSTOMERS' TAX PREPARATION. THE TAX ID NUMBER IS 54-600-1455. YOU WILL NEED TO SAVE PAYMENT RECEIPTS FOR YOUR RECORDS.



REFUND POLICY

NPR WILL PROVIDE A REFUND IF IT IS COMPLETELY CANCELLED BY THE DEPARTMENT OR IF THE REQUESTER HAS ONE OF THE FOLLOWING SITUATIONS PRIOR TO THE START OF THE PROGRAM.

- MEDICAL NECESSITY-DOCUMENTATION REQUIRED
- MILITARY DEPLOYMENT-DOCUMENTATION REQUIRED
- DEATH

OTHER CIRCUMSTANCES WILL BE REVIEWED BY PARKS AND RECREATION MANAGEMENT ON A CASE BY CASE BASIS. THE DEPARTMENT WILL NOT PRORATE FEES UNDER ANY CIRCUMSTANCES FOR MISSED DAYS OR WEEKS DUE TO VACATION, ILLNESS, OR ANY OTHER REASON. THE CITY OF NORFOLK RESERVES THE RIGHT TO ACCESS ANY FEE ALTERATIONS DUE TO INTERNAL CLOSINGS.



SIGN IN/OUT PROCEDURES

PARENTS, GUARDIANS, OR AUTHORIZED PERSONS MUST REPORT TO THE FRONT DESK WITH A VALID IDENTIFICATION TO PICK UP PARTICIPANTS AND SIGN THEM OUT IN THE LOGBOOK.

ANYONE NOT LISTED ON THE REGISTRATION FORM REQUIRES WRITTEN PERMISSION FROM A PARENT OR GUARDIAN TO PICK UP A PARTICIPANT. THIS CHANGE MUST BE RECEIVED, APPROVED, AND DOCUMENTED BY FACILITY STAFF PRIOR TO THE DAY OF PICK UP.

A LATE FEE OF \$5.00 PER CHILD WILL BE ASSESSED FOR EVERY 15 MINUTES PAST THE PICK-UP TIME. YOUR CHILD WILL NOT BE ABLE TO RETURN TO THE PROGRAM UNTIL ALL LATE FEES HAVE BEEN PAID. SEE STRANDED PARTICIPANTS SECTION FOR ADDITIONAL DETAILS.



STRANDED PARTICIPANT



PARTICIPANTS PICKED UP AFTER OPERATING HOURS WILL BE ACCOMPANIED BY AT LEAST TWO STAFF. EVERY ATTEMPT WILL BE MADE TO CONTACT PARENTS/GUARDIANS AND EMERGENCY CONTACTS WHEN A PARTICIPANT HAS NOT BEEN PICKED UP BY THE CLOSE OF THE PROGRAM.

LOCAL AUTHORITIES WILL BE CONTACTED THIRTY MINUTES AFTER PROGRAM CLOSURE AND STAFF WILL FOLLOW THE DIRECTIONS OF THE AUTHORITIES.

FOOD & SNACKS

SOME LOCATIONS WILL BE PROVIDED SNACKS OR MEALS THROUGH THE NORFOLK PUBLIC SCHOOLS NUTRITION PROGRAM AT NO COST TO FAMILIES. PARTICIPANTS ARE WELCOME TO BRING SNACKS IN A TEMPERATURE SAFE, SEALED, AND NON-BREAKABLE CONTAINER.

FOOD CONTAINERS MUST BE LABELED WITH THE PARTICIPANT'S NAME. REFRIGERATION OR STORAGE OF SNACKS AT THE FACILITIES WILL NOT BE PROVIDED. PARTICIPANTS ARE ABLE TO PURCHASE SNACKS FROM THE VENDING MACHINES LOCATED IN EACH FACILITY. PARTICIPANTS ARE RESPONSIBLE FOR THEIR MONEY AND PERSONAL ITEMS



FIELD TRIPS

PROGRAM PARTICIPANTS WILL HAVE AN OPPORTUNITY TO ATTEND VARIOUS EDUCATIONAL AND RECREATIONAL FIELD TRIPS. EACH PARTICIPANT MUST HAVE A SIGNED PERMISSION SLIP TO ATTEND ALL FIELD TRIPS. THE COSTS OF THE FIELD TRIPS HAVE BEEN INCLUDED IN THE PAYMENT. IF YOUR CHILD DOES NOT WISH TO ATTEND, YOU MUST MAKE OTHER ARRANGEMENTS.

CITY OF NORFOLK VANS, NPS BUSSES OR CHARTER BUS SERVICES WILL BE USED FOR ANY FIELD TRIP. DETAILS FOR EACH TRIP WILL BE COMMUNICATED AND CLEARLY POSTED IN EACH FACILITY. A SIGNED PERMISSION SLIP IS REQUIRED FOR YOUR CHILD TO PARTICIPATE

DEPARTURE TIMES WILL DEPEND ON THE LOCATION OF THE TRIP. ADDITIONALLY, PARTICIPANTS MUST LEAVE AND RETURN TO THE FACILITY WITH THE GROUP.

INCLUSION, ACCOMMODATIONS AND SPECIAL NEEDS

NORFOLK PARKS AND RECREATION VALUES INCLUSIVITY. PARTICIPANTS MUST BE ABLE TO DRESS AND USE RESTROOM FACILITIES WITHOUT STAFF ASSISTANCE, FUNCTION IN A GROUP AND RESPOND TO DIRECTIONS FROM STAFF.

IF ENROLLING A PARTICIPANT THAT REQUIRES ACCOMMODATIONS, PARENTS MUST COMPLETE AND SUBMIT AN INCLUSION, ACCOMMODATION & SPECIAL NEEDS FORM TO THE FACILITY SUPERVISOR FOR REVIEW.



ILLNESS AND MEDICATION

PARENTS MUST PICK UP PARTICIPANTS WITHIN ONE HOUR OF BEING NOTIFIED OF AN ILLNESS OR TEMPERATURE OF 100.4 DEGREES OR HIGHER. PARTICIPANTS WHO HAVE BEEN SICK WITH A FEVER MUST REMAIN OUT OF THE PROGRAM FOR 24 HOURS AFTER THE FEVER BREAKS. FOR THE SAFETY OF ALL, KEEP YOUR CHILD HOME IF THEY ARE EXHIBITING SIGNS AND SYMPTOMS OF COVID-19.

CERTAIN ILLNESSES AND COMMUNICABLE DISEASES SUCH AS, BUT NOT LIMITED TO, COVID-19, RINGWORM, LICE, PINKEYE, HAND, FOOT AND MOUTH, AND STREP THROAT REQUIRE PARENTS TO SEEK MEDICAL CARE FOR THE PARTICIPANT. IN THE EVENT OF THIS TYPE OF ILLNESS, A PHYSICIAN'S NOTE IS REQUIRED BEFORE THE PARTICIPANT WILL BE PERMITTED TO RETURN TO THE PROGRAM.

SECTION §54.1-3408 OF THE CODE OF VIRGINIA REQUIRES THAT MEDICATIONS BE ADMINISTERED BY HEALTH CARE PROFESSIONALS AND PROHIBITS UNTRAINED STAFF FROM ADMINISTERING MEDICATION TO PROGRAM PARTICIPANTS. THEREFORE, NO MEDICATION CAN BE ADMINISTERED TO PARTICIPANTS BY STAFF.

ACCIDENT/INCIDENT REPORTING

THERE IS ALWAYS A CPR AND FIRST AIDE TRAINED STAFF ON DUTY. IF YOUR CHILD IS INJURED IN AN ACCIDENT, WE WILL CONTACT YOU FIRST, THEN SOMEONE FROM YOUR EMERGENCY CONTACT LIST IMMEDIATELY. ROUTINE AND MINOR INJURIES (I.E., A SCRAPED KNEE OR BRUISED ELBOW) WILL BE HANDLED AT EACH LOCATION AND YOU WILL BE NOTIFIED OF ANY MINOR INJURIES AT PICK UP.

IF A CHILD IS SERIOUSLY INJURED, WE WILL CALL 911 THEN NOTIFY YOU. IF YOU OR YOUR EMERGENCY CONTACT CANNOT BE REACHED, A STAFF MEMBER WILL ACCOMPANY THE CHILD IN THE AMBULANCE. YOUR PERSONAL MEDICAL INSURANCE POLICY BEARS PRIMARY RESPONSIBILITY IN CASE OF ACCIDENTAL INJURY TO YOUR CHILD. NOTIFY STAFF TO UPDATE RECORDS IF CONTACT INFORMATION FOR YOU OR AN EMERGENCY CONTACT HAS CHANGED.

INCLEMENT WEATHER

THE CITY OF NORFOLK MAY CLOSE OR CANCEL PROGRAMS DUE TO SEVERE WEATHER CONDITIONS OR UNFORESEEN CIRCUMSTANCES. PARENTS/GUARDIANS WILL BE NOTIFIED TO PICK UP THEIR CHILD WITHIN ONE HOUR IF THE NEED ARISES. IF PARENTS/GUARDIANS CANNOT BE REACHED, STAFF WILL UTILIZE THE EMERGENCY CONTACT LIST.

INCLEMENT WEATHER CLOSURES/RE-OPENINGS ARE ANNOUNCED ON DEPARTMENT AND CITY WEBSITES, SOCIAL MEDIA, RADIO, AND TELEVISION STATIONS. NPR WILL NOT ISSUE CREDIT, TRANSFER OR REFUND FOR ANY DAY MISSED BECAUSE OF INCLEMENT WEATHER. WE ENCOURAGE YOU TO SIGN UP FOR NORFOLK ALERTS TO RECEIVE ALERTS ABOUT EMERGENCIES, FACILITY CLOSINGS AND INCLEMENT WEATHER UPDATES. PARENTS ARE ENCOURAGE TO SIGN UP FOR NORFOLK ALERT AT [HTTPS://MEMBER.EVERBRIDGE.NET/453003085612694/LOGIN](https://member.everbridge.net/453003085612694/login)

CELL PHONES AND ELECTRONICS

CELL PHONES OR OTHER PERSONAL ITEMS SUCH AS ELECTRONIC DEVICES, COLLECTOR GAME CARDS, TOYS, ETC. FROM HOME TO USE DURING PROGRAM TIMES ARE PROHIBITED UNLESS AUTHORIZED BY STAFF. THE CITY OF NORFOLK AND PROGRAM STAFF ARE NOT RESPONSIBLE FOR LOST, STOLEN AND/OR DAMAGED ITEMS.

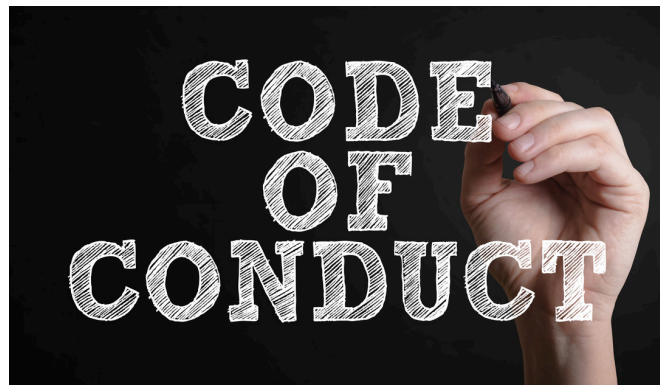
ALL BELONGINGS ARE TO BE LABELED WITH THE PARTICIPANT'S NAME. PARTICIPANTS AND PARENTS/GUARDIANS MUST COMPLY WITH ALL GUIDELINES AND PROCEDURES WRITTEN AND/OR IMPLIED REGARDING PARTICIPATION IN THE SUMMER PROGRAM.



OPERATIONAL GUIDELINES

NPR SOAR AFTER SCHOOL PROGRAM OPERATES UNDER §63.2-1715 OF THE CODE OF VIRGINIA, WHICH ALLOWS LOCAL GOVERNMENTS TO ESTABLISH SAFETY AND SUPERVISORY STANDARDS, SUCH AS THOSE IN THIS PARENT HANDBOOK.

NPR IS COMMITTED TO PROTECTING THE SAFETY AND WELL-BEING OF ALL PARTICIPANTS. SECTION §63.1-248.3 OF THE CODE OF VIRGINIA REQUIRES ANY PERSON PROVIDING FULL OR PART-TIME CHILDCARE FOR PAY TO REPORT ANY SUSPECTED CHILD ABUSE OR NEGLECT.



PARTICIPANT, PARENT/GUARDIAN CODE OF CONDUCT

FOR EVERYONE TO HAVE A SAFE AND ENJOYABLE EXPERIENCE, ALL PARTICIPANTS MUST DEMONSTRATE APPROPRIATE BEHAVIOR AND RESPECT FOR THEMSELVES AND OTHERS. MEETING THE FOLLOWING EXPECTATIONS WILL PROVIDE THE GREATEST OPPORTUNITY FOR SUCCESS.

- PARTICIPANTS MUST RESPECT ALL PEOPLE AND PROPERTY.
- PARTICIPANTS MUST FOLLOW THE RULES ASSOCIATED WITH ACTIVITIES AND PROGRAM AREAS AND ASK A STAFF MEMBER FOR CLARIFICATION, IF NEEDED.
- PARTICIPANTS MUST COMMUNICATE AND CONDUCT THEMSELVES IN AN APPROPRIATE MANNER. THREATENING WORDS, TONE OF VOICE, GESTURES, FOUL LANGUAGE, SEXUALLY INAPPROPRIATE BEHAVIOR, TEASING, THROWING OF OBJECTS AND PHYSICAL CONTACT WILL NOT BE TOLERATED.
- PARTICIPANTS MUST PROMOTE AND SUPPORT A SAFE, FUN, AND HEALTHY ENVIRONMENT.
- ANY BEHAVIOR DEEMED AGGRESSIVE OR THREATENING WILL REQUIRE IMMEDIATE REMOVAL FROM THE PROGRAM/FACILITY WITH THE POSSIBILITY OF FURTHER CONSEQUENCES. ANY UNLAWFUL BEHAVIOR OR ACTIVITY WILL BE REPORTED TO THE APPROPRIATE LEGAL AUTHORITIES FOR FURTHER ACTION.
- PARTICIPANTS ARE TO MAINTAIN INDIVIDUAL SPACE AND KEEP THEIR HANDS, FEET, ETC. TO THEMSELVES.
- PARENTS/GUARDIANS ARE FINANCIALLY RESPONSIBLE WHEN THE PARTICIPANT:
 - DEFACES AND/OR DESTROYS THE BUILDING, GROUNDS, EQUIPMENT, VEHICLES, OR OTHERS' BELONGINGS.
 - TAMPERS WITH OR PULLS THE FIRE ALARM WITHOUT DUE CAUSE.

BULLYING

NPR HAS ZERO TOLERANCE FOR BULLYING FROM PARTICIPANTS AND STAFF. BULLYING IS DEFINED AS BEHAVIOR THAT INVOLVES POWER OR CONTROL OF ONE PARTICIPANT DIRECTED TOWARDS ANOTHER. THESE ACTIONS INCLUDE, BUT ARE NOT LIMITED TO:

- THREATS
- SPREADING RUMORS
- VERBAL OR PHYSICAL ATTACKS
- INTENTIONAL REMOVAL OF A PARTICIPANT FROM AN ACTIVITY

ANY INAPPROPRIATE BEHAVIOR CAN RESULT IN DISCIPLINARY ACTION RANGING FROM A WARNING, TEMPORARY SUSPENSION AND/OR EXPULSION FROM THE PROGRAM.



BEHAVIOR DEVELOPMENT PLAN

EACH PARENT WILL BE PROVIDED A COPY OF THE BEHAVIORAL DEVELOPMENT PLAN. BEHAVIORAL EXPECTATIONS AND DISCIPLINARY ACTIONS ARE APPLIED CONSISTENTLY, FAIRLY AND IN A UNIFORM MANNER. THE BEHAVIORAL DEVELOPMENT PLAN WILL BE THE STANDARD WHEN DETERMINING CONSEQUENCES AND IS INTENDED TO BE ILLUSTRATIVE AND DIRECTIONAL RATHER THAN PUNITIVE.

BEHAVIOR GUIDANCE IS CONSTRUCTIVE IN NATURE, AGE/STAGE APPROPRIATE, AND IS INTENDED TO REDIRECT CHILDREN TOWARD APPROPRIATE BEHAVIOR AND CONFLICT RESOLUTION.

IMPORTANT DATES

EARLY RELEASE DAYS (DISMISSAL - 6:00PM) (NO ADDITIONAL COST OR REGISTRATION)

MAY 26-29, 2026- LAST WEEK OF SCHOOL!

EXTENDED DAY PROGRAM 8:00AM - 6:00PM (ADDITIONAL COST AND REGISTRATION)

SPRING BREAK

APRIL 6-10, 2026: (SPECIFIC LOCATIONS)

NON-PROGRAM DAYS (P & R FACILITIES CLOSED)

- ·AUGUST 29, 2025: TEACHERS' WORKDAY
- ·SEPTEMBER 1, 2025: LABOR DAY
- ·OCTOBER 13, 2025: TEACHERS' WORKDAY
- ·OCTOBER 27, 2025: TEACHERS' WORKDAY
- ·NOVEMBER 4, 2025: TEACHERS' WORKDAY
- ·NOVEMBER 11, 2025: VETERANS DAY
- ·NOVEMBER 26-28, 2025: THANKSGIVING BREAK
- ·DECEMBER 22-31, 2025: NPS WINTER BREAK
- ·JANUARY 1, 2026: NEW YEAR DAY
- ·JANUARY 2, 2026: NPS WINTER BREAK
- ·JANUARY 16, 2026: TEACHERS' WORKDAY
- ·JANUARY 19, 2026: MARTIN LUTHER KING JR. DAY
- ·FEBRUARY 16, 2026: PRESIDENTS DAY
- ·MARCH 20, 2026: TEACHERS' WORKDAY
- ·APRIL 6-10, 2026: NPS SPRING BREAK
- ·MAY 26, 2026: MEMORIAL DAY
- JUNE 1-5, 2026: P & R PROFESSIONAL DEVELOPMENT WEEK

**CHANGES TO THE CALENDAR MAY OCCUR DUE TO UNFORESEEN EVENTS.
BE SURE TO CHECK WITH P&R STAFF FOR UPDATES.**

NORFOLK
-PARKS AND RECREATION
220 BOUSH ST.
NORFOLK, VA 23510
(757) 823-4921

