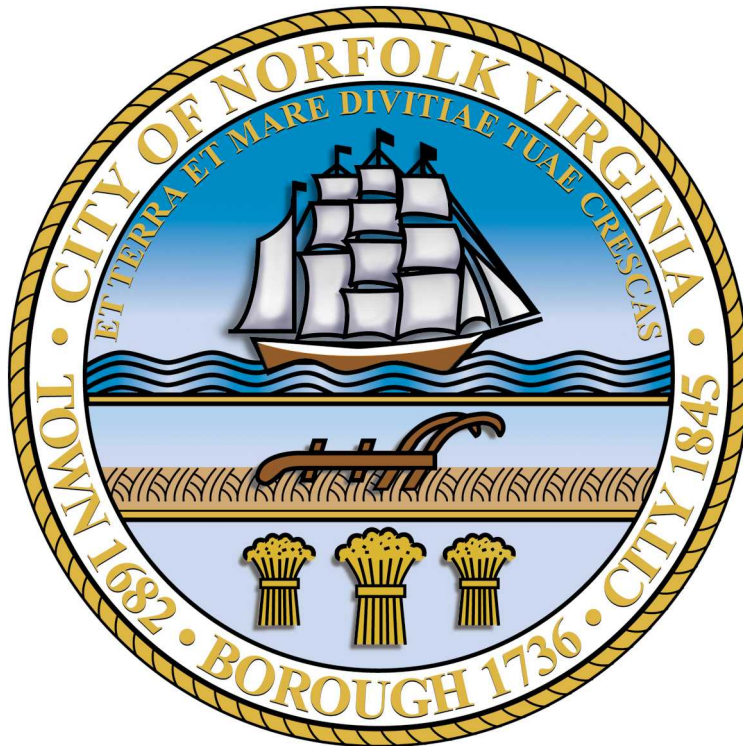

Norfolk Statistical Information



This page intentionally left blank

NORFOLK STATISTICAL INFORMATION

FORM OF GOVERNMENT

Norfolk is an independent, full service city with sole local government taxing power within its boundaries. It derives its governing authority from a charter (the "Charter") originally adopted by the General Assembly of Virginia in 1918, which authorizes a Council-Manager form of government. The members are elected to office under a ward-based system with two members elected from citywide super wards. Beginning July 1, 2006, as a result of a charter change approved by the Virginia General Assembly, Norfolk swore in the first mayor elected at large. Prior to that time, the mayor was appointed by the City Council. Among the city officials currently appointed by the City Council is the City Manager, who serves as the administrative head of the municipal government. The City Manager carries out the city's policies, directs business procedures and appoints, has the power to remove the heads of departments and other employees of the city except those otherwise specifically covered by statutory provisions. The City Council also appoints certain boards, commissions and authorities of the city.

The city provides a full range of services including: police protection; fire and paramedical services; public health, mental health, and social services; planning and zoning management; neighborhood preservation and code enforcement; environmental storm water management; local street maintenance; traffic control; design and construction of city buildings and infrastructure; parks and cemeteries operations and maintenance; recreation and library services; solid waste disposal and recycling; general administrative services; water and wastewater utilities; and construction and operation of parking facilities. The city budget allocates state and federal pass through funds for education, public health, and other programs.

GEOGRAPHY

Norfolk lies at the mouth of the James and Elizabeth Rivers and the Chesapeake Bay, and is adjacent to the Atlantic Ocean and the cities of Virginia Beach, Portsmouth and Chesapeake. It has seven miles of Chesapeake Bay beachfront and a total of 144 miles of shoreline along the lakes, rivers and bay.

COMMUNITY PROFILE

The City of Norfolk was established as a town in 1682, then as a borough in 1736, and it was incorporated as a city in 1845. Norfolk is a city of approximately 246,000 residents and more than 100 diverse neighborhoods. It is the cultural, educational, business and medical center of Hampton Roads that hosts the region's international airport and one of the busiest international ports on the East Coast of the United States.

The city is home to the world's largest naval complex with headquarters for Commander in Chief of U.S. Atlantic Command, NATO Supreme Allied Command Atlantic, Commander in Chief U.S. Atlantic Fleet and other major naval commands. According to information released by the U.S. Navy in October of 2012, the Navy's direct economic impact to the region saw an increase of approximately \$1.5 billion from \$13.4 billion in FY 2010 to \$14.9 billion in FY 2011. Total annual payroll (military and civilian) remained steady at \$8.5 billion. However, procurement expenditures increased \$1.1 billion from approximately \$5.2 billion in FY 2010 to \$6.3 billion in FY 2011. Approximately 83,095 active duty Navy military personnel were in Hampton Roads in 2011 and approximately 59 percent were assigned to Norfolk. In addition, there were approximately 39,763 Navy civilian employees in Hampton Roads and 49 percent were located in Norfolk in FY 2011. The military presence also provides a highly qualified pool of veterans for our local businesses

The city also serves as a gateway between world commerce centers and the industrial heartland of the United States. With one of the world's largest natural deep-water harbors and a temperate climate, the city hosts the Norfolk International Terminals (NIT), one of the largest general cargo ports on the east coast. The Port's container volume for the fiscal year ended June 30, 2014 was 2,305,911 TEU's (twenty-foot equivalent container units), an increase of 6.5 percent from FY 2013. With the Heartland Corridor now operational, a full day has been shaved from transporting containers from the Port to the Midwest. Annually, Port related business provides over 343,000 jobs, \$41.0 billion in revenues, \$13.5 billion in payroll compensation, and \$1.2 billion in local tax revenues.

Economic development initiatives are focused on the attraction, expansion and retention of businesses playing to the city's strengths, which include maritime, higher education, medical and research facilities, neighborhood and community revitalization and commercial corridor development. Under the city's plan to promote the highest and best use for scarce land, real property assessed values increased 107.4 percent since 2002 (from \$8,882,064,000 in 2002 to \$18,421,412,000 in 2014).

The city continues to undergo a successful renewal including new office, retail, entertainment and hotel construction downtown, new residential development along the rivers and bay front and revitalization projects in many of its neighborhoods. Norfolk is home to The Tide, Virginia's first and only light rail system and the Commonwealth's only cruise terminal. Currently, many new state-of-the-art construction projects are underway: a new downtown hotel and convention center, and a revitalized Waterside Live entertainment complex.

CITY FACTS

Total square miles (land area): 65.98

Population estimate (Weldon Cooper Center): 246,394

Median household income (ACS 2013 5 year estimate): \$44,747

Average sales price for existing single family homes (2014): \$183,477

Average sales price for new single family homes (2014): \$292,008

Total residential homes sold(2014, attached and detached): 2,608

Percentage of non-taxable property (2013): 37.7%

Number of Public Schools:

- Elementary schools: 34
- Middle schools: 7
- High schools: 5
- Preschools: 2
- Special Purpose Schools: 3
- Other School Facilities: 4

CITY FACTS CONTINUED

Public institutions of higher learning:

- Old Dominion University
- Norfolk State University
- Tidewater Community College

Private institutions of higher learning:

- Eastern Virginia Medical School
- Virginia Wesleyan College

Number of parks:

- Two festival parks (specially designated parks which are permitted, can support festivals, and comply with ABC Board regulations)
- Six community parks (10 acres in size or larger which support a variety of both active and passive activities)
- 37 neighborhood active parks (typically 10 acres or less that provide some type of recreational component for active play)
- 27 neighborhood passive parks (typically 10 acres or less with no active play component or equipment)
- 12 dog parks

Number of community centers: 20

Number of public pools: 6

Number of libraries: 1 main library, 1 anchor branch, 10 branches and one bookmobile

Number of major venues for public performances: 7

Home to the first cruise ship terminal in Virginia

Established the first light rail system in Virginia, which runs a total length of 7.4 miles and has a total of 11 stations with 4 park-and-ride lots

ECONOMIC AND DEMOGRAPHIC FACTORS

ASSESSED VALUE OF TAXABLE PROPERTY

Table 1: Assessed Valuations of Taxable Property 2002-2014 (In thousands)

Year	Real Property	Personal Property	Other Property	Total Taxable Assessed Value
2002	\$8,882,064	\$1,273,647	\$281,182	\$10,436,893
2003	\$9,356,760	\$1,311,951	\$271,046	\$10,939,757
2004	\$10,029,639	\$1,503,713	\$281,578	\$11,814,930
2005	\$10,960,812	\$1,569,991	\$305,154	\$12,835,957
2006	\$12,691,527	\$1,655,021	\$316,863	\$14,663,411
2007	\$15,607,512	\$1,687,318	\$324,387	\$17,619,217
2008	\$18,401,851	\$1,983,503	\$193,287	\$20,578,641
2009	\$19,397,795	\$1,676,811	\$233,703	\$21,308,309
2010	\$19,940,273	\$1,610,680	\$226,801	\$21,777,754
2011	\$19,320,642	\$1,832,276	\$230,756	\$21,383,647
2012	\$18,676,729	\$1,613,797	\$238,497	\$20,529,023
2013	\$18,319,947	\$1,532,337	\$241,023	\$20,093,307
2014	\$18,421,412	\$1,512,332	\$258,302	\$20,192,046

Source: City of Norfolk 2014 Comprehensive Annual Financial Report (CAFR)

ASSESSED PROPERTY VALUE CHANGE

Table 2: Proposed Assessed Value Change From 7/1/14 to 7/1/15 By Property Class*

Property Class	Estimated Values		\$ Difference	% Difference
	July 1, 2014	July 1, 2015		
Residential	10,512,966,400	10,740,171,200	227,204,800	2%
Residential Condos	1,028,253,600	1,020,020,600	-8,233,000	-1%
Commercial	3,623,977,200	3,701,413,000	77,435,800	2%
Manufacturing	566,273,000	587,902,800	21,629,800	4%
Apartments/Co-ops	1,755,367,300	1,840,453,300	85,086,000	5%
Vacant Land**	319,397,600	230,000,000	-89,397,600	-28%
Total	17,806,235,100	18,119,960,900	313,725,800	2%

* The proposed values for July 1, 2014 include permit values for the 4th quarter of FY 2014.

** This number is extrapolated based on known totals and overall total

PRINCIPAL TAXPAYERS

Table 3: Principal Property Taxpayers in 2014

Rank	Taxpayer	Real Property Taxable Assessed Value	Percent of Total Assessed Value
1	Dominion Virginia Power Co.	\$301,301,543	1.64%
2	MacArthur Shopping Center LLC (Taubman Co.)	\$183,168,300	0.99%
3	Norfolk Western Railway Company	\$128,937,516	0.70%
4	Old Dominion University Real Estate Foundation	\$116,691,000	0.63%
5	Verizon Virginia, Inc.	\$98,558,756	0.54%
6	Norfolk Southern	\$94,315,266	0.51%
7	Virginia Natural Gas, Inc.	\$71,459,122	0.39%
8	Wells Fargo Building	\$69,376,700	0.38%
9	Dominion Enterprises	\$61,618,200	0.33%
10	Military Circle Ltd. Partnership	\$60,093,800	0.33%

PRINCIPAL EMPLOYERS

Table 4: 25 Largest Employers in 2014

1. U.S. Department of Defense
2. Sentara Healthcare
3. Norfolk Public Schools
4. City of Norfolk
5. Old Dominion University, Norfolk
6. Children's Hospital of the King's Daughters
7. Norfolk State University
8. Norshipco
9. Eastern Virginia Medical School
10. U.S. Navy Exchange
11. Portfolio Recovery Association
12. Bon Secours DePaul Medical Center
13. Maersk Line Limited
14. Tidewater Community College
15. Postal Service
16. Wal Mart
17. Bank of America
18. Sentara Health Management
19. U.S. Department of Homeland Defense
20. Virginia International Terminal
21. Anthem
22. Colonnas Shipyard
23. CMA CGM America
24. ODU Research Foundation
25. Norfolk Naval Station

Source: Virginia Employment Commission, 2nd Quarter 2014

Table 5: Employers by Size of Establishment

	Number of Employees	Norfolk	Virginia
0 to 4		2,609	138,762
5 to 9		932	37,237
10 to 19		881	27,674
20 to 49		624	19,855
50 to 99		229	7,086
100 to 249		120	3,699
250 to 499		38	1,045
500 to 999		15	356
1000 and over		16	236

Source: Virginia Employment Commission, Quarterly Census of Employment and Wages (QCEW), 2nd Quarter 2014

Table 6: Top 10 Places Workers are Commuting From

Area of Virginia	Workers
Virginia Beach	35,871
Chesapeake	18,779
Portsmouth	7,162
Suffolk	4,745
Hampton	4,463
Newport News	3,627
Fairfax County	1,460
Chesterfield County	1,228
Isle of Wight County	1,210
Henrico County	1,046

Source: U.S. Census Bureau, OnTheMap Application and LEHD Origin-Destination Employment Statistics

POPULATION AND AGE

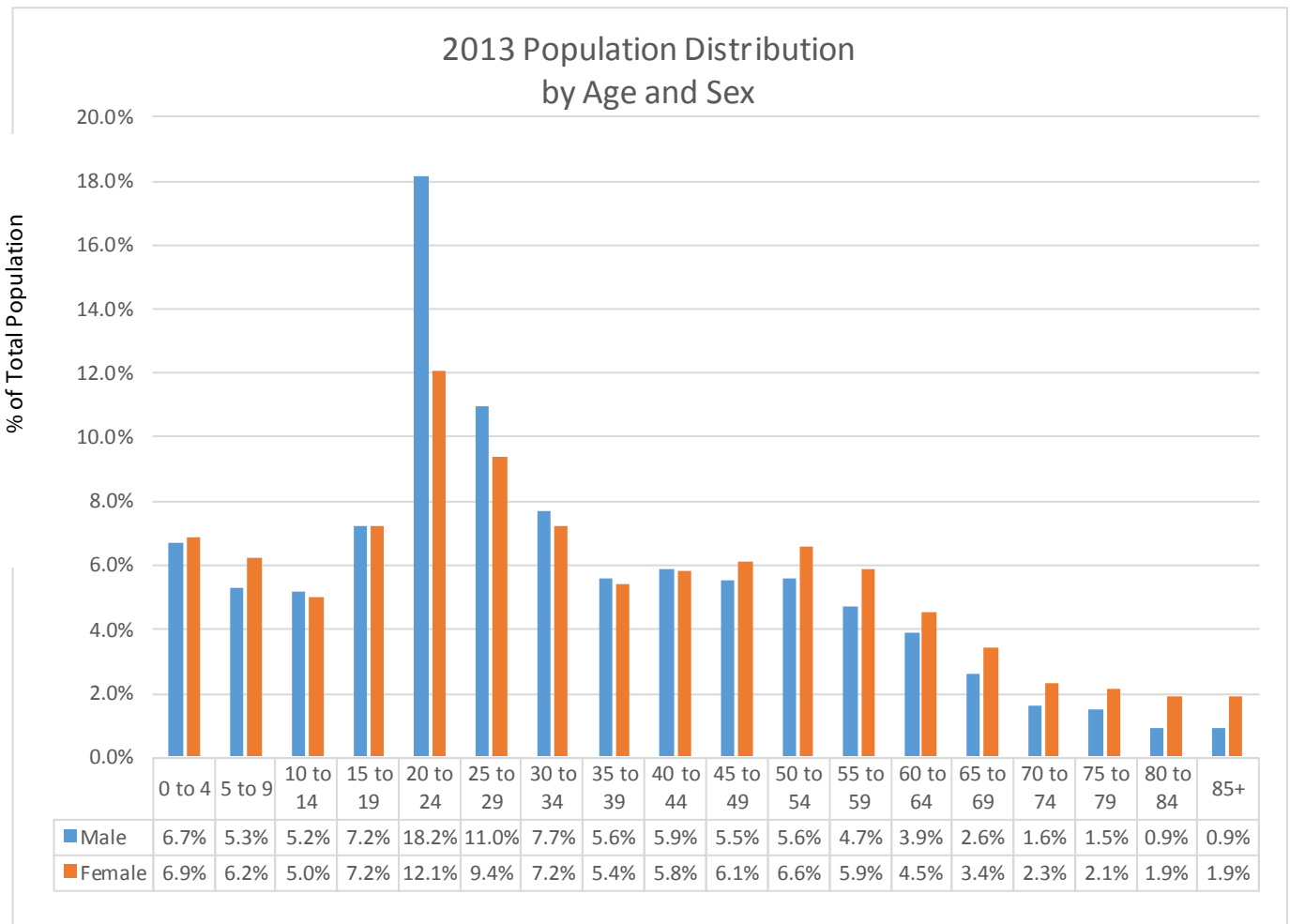
As shown in Table 7, the population of the city increased by 8,400 persons according to the 2010 decennial census, reversing four decades of population decline. Norfolk is the second most populous city in Virginia.

Table 7: Population Trend Comparison, 1960-2010

Year	City of Norfolk		Commonwealth of Virginia		U.S.	
	Number	Percent	Number	Percent	Number	Percent
1960	305,872	--	3,966,949	--	179,323,175	--
1970	307,951	0.7%	4,648,494	17.2%	203,211,926	13.3%
1980	266,979	-13.3%	5,346,818	15.0%	226,545,805	11.5%
1990	261,229	-2.2%	6,187,358	15.7%	248,709,873	9.8%
2000	234,403	-10.3%	8,001,024	29.3%	281,421,906	13.2%
2010	242,803	3.6%	7,078,515	-11.5%	308,745,538	9.7%

Source: U. S. Department of Commerce, Bureau of the Census; Decennial Census

Table 8: Population Distribution by Age and Sex, 2013



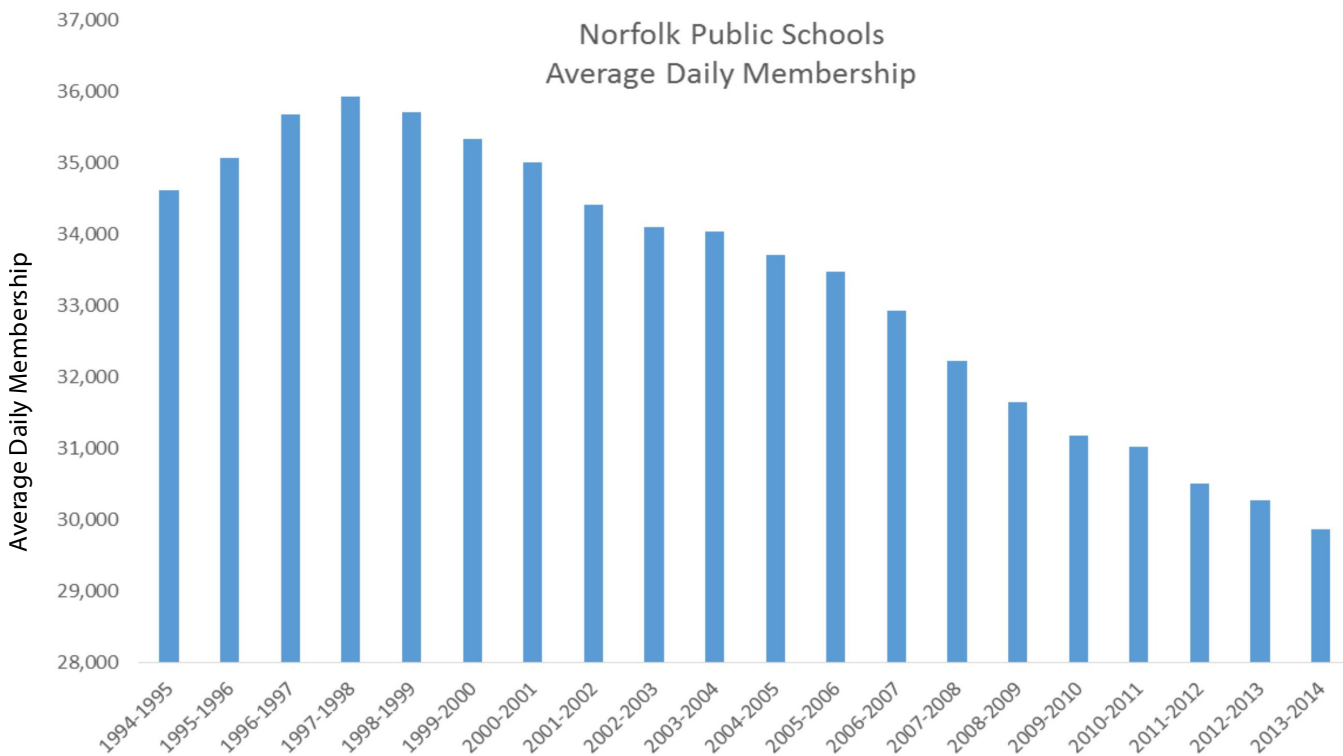
Source: U.S. Census Bureau, 2013 American Community Survey

STUDENT POPULATION

Table 9: Norfolk Public Schools Student Population, 1994-2014

School Year	Average Daily Membership (March 31)	Percent Change
1994-1995	34,613	0.2%
1995-1996	35,059	1.3%
1996-1997	35,677	1.8%
1997-1998	35,923	0.7%
1998-1999	35,709	-0.6%
1999-2000	35,326	-1.1%
2000-2001	35,000	-0.9%
2001-2002	34,408	-1.7%
2002-2003	34,089	-0.9%
2003-2004	34,030	-0.2%
2004-2005	33,708	-0.9%
2005-2006	33,472	-0.7%
2006-2007	32,929	-1.6%
2007-2008	32,213	-2.2%
2008-2009	31,639	-1.8%
2009-2010	31,176	-1.5%
2010-2011	31,020	-0.5%
2011-2012	30,498	-1.7%
2012-2013	30,260	-0.8%
2013-2014	29,805	-1.33%

Source: Norfolk Public Schools; Virginia Department of Education



EDUCATIONAL ATTAINMENT

Table 10: Education Attainment for Persons 25 and over (2013)

	Total	Male	Female
Population 18 to 24 years	47,605	28,533	19,072
Less than high school graduate	8.2%	7.8%	8.7%
High school graduate (includes equivalency)	33.2%	37.2%	27.1%
Some college or associates degree	52.5%	50.7%	55.2%
Bachelor's degree or higher	6.1%	4.3%	8.9%
Population 25 years and over	146,077	72,698	73,379
Less than 9 th grade	3.7%	3.6%	3.7%
9 th to 12 th grade, no diploma	10.3%	10.0%	10.6%
High school graduate (includes equivalency)	27.0%	28.6%	25.4%
Some college, no degree	26.8%	27.2%	26.3%
Associates degree	6.9%	5.9%	7.8%
Bachelor's degree	15.4%	14.5%	16.2%
Graduate or professional degree	10.0%	10.1%	9.9%

Source: U.S. Census Bureau, 2009-2013 American Community Survey

INCOME

Table 11: Per Capita Personal Income Comparisons, 2001-2013

Year	Norfolk	VA-NC MSA	Virginia	United States
2001	\$25,881	\$29,197	\$33,673	\$31,524
2002	\$26,790	\$30,489	\$34,315	\$31,798
2003	\$29,070	\$32,660	\$35,910	\$32,676
2004	\$30,070	\$33,997	\$37,742	\$34,300
2005	\$31,986	\$35,618	\$39,825	\$35,888
2006	\$33,707	\$37,735	\$42,075	\$38,127
2007	\$34,990	\$39,541	\$43,921	\$39,804
2008	\$35,713	\$40,687	\$44,900	\$40,873
2009	\$35,490	\$40,459	\$44,063	\$39,357
2010	\$35,959	\$41,063	\$44,854	\$40,163
2011	\$37,754	\$43,179	\$47,076	\$42,332
2012	\$38,762	\$44,553	\$48,715	\$44,200
2013	\$39,009	\$44,756	\$48,838	\$44,765

Source: U.S. Department of Commerce, Bureau of Economic Analysis, Regional Economic Information System

Table 12: Median Household Income 2011-2013 (IN 2013 INFLATION-ADJUSTED DOLLARS)

Subject	City of Norfolk			Commonwealth of Virginia		
	2013 Estimate	2012 Estimate	2011 Estimate	2013 Estimate	2012 Estimate	2011 Estimate
INCOME AND BENEFITS						
Total households	85,484	86,347	86,480	116,291,033	115,969,540	114,991,725
Less than \$10,000	9.9%	10.9%	9.4%	7.6%	7.7%	7.8%
\$10,000 to \$14,999	7.4%	6.0%	6.0%	5.4%	5.6%	5.8%
\$15,000 to \$24,999	13.2%	11.2%	13.2%	10.8%	11.1%	11.4%
\$25,000 to \$34,999	11.8%	12.0%	11.6%	10.3%	10.4%	10.6%
\$35,000 to \$49,999	14.0%	15.7%	17.1%	13.6%	13.8%	13.9%
\$50,000 to \$74,999	19.2%	19.5%	19.3%	17.9%	18.0%	18.0%
\$75,000 to \$99,999	10.2%	8.6%	9.5%	11.9%	11.9%	11.7%
\$100,000 to \$149,999	8.9%	9.5%	8.5%	12.7%	12.4%	12.1%
\$150,000 to \$199,999	2.9%	3.4%	3.6%	4.9%	4.6%	4.4%
\$200,000 or more	2.6%	3.2%	1.6%	5.0%	4.6%	4.3%
Median household income	44,030	42,644	43,108	52,250	51,371	50,502

Source: 2013 American Community Survey 1-Year Estimates

HOUSING AND CONSTRUCTION AVAILABILITY

Table 13: New Construction and Property Values, 2000-2014

Year	Residential Construction			Non-Residential Construction	
	Building Permits	Number of Units	Estimated Value (in thousands)	Building Permits	Estimated Value (in thousands)
2000	189	309	32,609	45	138,473
2001	186	400	35,069	35	62,046
2002	290	462	44,498	53	51,451
2003	286	597	61,582	41	32,262
2004	506	766	83,525	71	14,658
2005	560	1,191	204,391	80	80,316
2006	531	1,058	133,053	60	165,989
2007	389	491	688,476	55	81,396
2008	277	815	101,212	35	102,714
2009	209	535	35,878	38	138,131
2010	191	621	58,729	35	104,922
2011	221	479	37,298	27	40,073
2012	268	371	39,360	26	116,401
2013	384	822	63,728	28	105,635
2014	432	1,393	93,072	33	37,575

Source: City of Norfolk Department of Planning and Community Development. Figures are for the fiscal year.

UNEMPLOYMENT

Table 14: Unemployment Rate Comparisons, 2000-2013

	2004	2005	2006	2007	2008	2009	2010	2011	2012	2013
City of Norfolk	5.1	5.0	4.2	4.1	5.3	8.9	9.1	8.3	7.7	7.0
Hampton Roads MSA	4.0	3.9	3.3	3.2	4.2	7.1	7.5	7.1	6.5	6.0
Commonwealth of Virginia	3.7	3.5	3.0	3.1	4.0	7.0	7.1	6.4	5.9	5.5
United States	5.5	5.1	4.6	4.6	5.8	9.3	9.6	8.9	8.1	7.4

* Estimated numbers as of March 2015

Sources: U.S. Bureau of Labor Statistics: Labor Force Statistics from the Current Population Survey and Local Area Unemployment Statistics (LAUS) series. Note: Not seasonally adjusted; Figures represent annual averages.

WAGES

Table 15: Distribution of Average Hourly Wage in Virginia, Top 20 Counties/Cities

Rank	Area Name	Total Average Employment	*Average Hourly Wage	Average Weekly Wage	*Average Annual Wage
1	Goochland County, Virginia	14,265	\$39.20	\$1,568	\$81,536
2	Surry County, Virginia	2,421	\$37.98	\$1,519	\$78,988
3	Arlington County, Virginia	164,832	\$37.78	\$1,511	\$78,572
4	Fairfax County, Virginia	582,314	\$36.43	\$1,457	\$75,764
5	Alexandria City, Virginia	95,025	\$33.03	\$1,321	\$68,692
6	King George County, Virginia	10,924	\$32.58	\$1,303	\$67,756
7	Falls Church City, Virginia	10,957	\$29.53	\$1,181	\$61,412
8	Manassas City, Virginia	23,218	\$27.80	\$1,112	\$57,824
9	Loudoun County, Virginia	149,997	\$27.25	\$1,090	\$56,680
10	Richmond City, Virginia	148,260	\$25.25	\$1,010	\$52,520
11	Hopewell City, Virginia	8,181	\$24.05	\$962	\$50,024
12	Fairfax City, Virginia	19,510	\$23.85	\$954	\$49,608
13	Prince George County, Virginia	15,064	\$23.63	\$945	\$49,140
14	Manassas Park City, Virginia	2,875	\$23.50	\$940	\$48,880
15	Newport News City, Virginia	98,699	\$23.20	\$928	\$48,256
16	Portsmouth City, Virginia	44,246	\$23.10	\$924	\$48,048
17	Charlottesville City, Virginia	37,782	\$22.73	\$909	\$47,268
18	Henrico County, Virginia	180,113	\$22.60	\$904	\$47,008
19	Norfolk City, Virginia	136,53	\$22.60	\$904	\$47,008
20	Albemarle County, Virginia	51,847	\$21.78	\$871	\$45,292

* Assumes a 40-hour week worked the year round.

Source: Bureau of Labor Statistics, Quarterly Census of Employment and Wages, 2nd Quarter 2014

This page intentionally left blank