

## How much does a Construction General Permit cost?

Fees are based on the area of land disturbance:

- Greater than 2500 sqft but less than 1 acre: \$209
- Equal to or greater than 1 acre but less than 5 acres: \$2,700
- Equal to or greater than 5 acres but less than 10 acres: \$3,400
- Equal to or greater than 10 acres but less than 50 acres: \$4,500

## How long does the process take?

With the proper documentation, the permit process can be completed within one to two weeks.



## Additional Information

Virginia Department of Environmental Quality (General Construction Permit):

<http://www.deq.virginia.gov/Programs/Water/StormwaterManagement/VSMPPermits/ConstructionGeneralPermit.aspx>

Questions regarding the Construction General Permit process? Suggestions for improvement? Please contact the Bureau of Environmental Services at: **(757) 664-4368** or email at: [planning@norfolk.gov](mailto:planning@norfolk.gov).



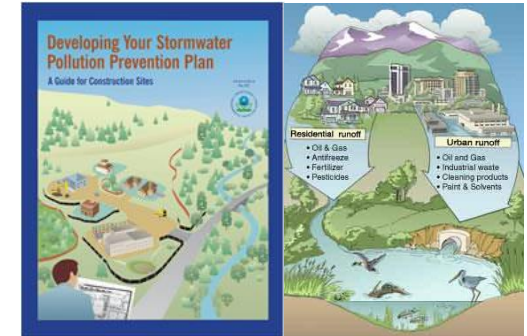
## Department of City Planning

810 Union Street  
Suite 508  
Norfolk, VA 23510  
Phone (757) 664-4752  
Fax (757) 441-1569



*Last Updated: 8/9/2017*

## CONSTRUCTION GENERAL PERMIT PROCESS (SWPPP)



# CONSTRUCTION GENERAL PERMIT PROCESS (SWPPP)

## What is the Construction General Permit (CGP)?

The CGP authorizes, subject to specific terms and conditions, the discharge of stormwater from construction sites or activities. The CGP requires operators of such construction sites or activities to implement stormwater controls and to develop stormwater pollution prevention plans (SWPPPs) in an effort to minimize the amount of sediment and other pollutants associated with construction sites from being discharged in stormwater runoff.

## When are CGPs required in Norfolk?

CGPs are required for construction activities resulting in land disturbance equal to or greater than one acre and for construction activities resulting in land disturbance less than one acre that are part of a larger common plan of development or sale that ultimately disturbs one or more acres.

## Why does the City of Norfolk require CGPs?

The City must comply with the Commonwealth's Erosion and Sediment Control regulations. The state regulations are intended for the effective control of soil erosion, sediment deposition, and nonagricultural runoff in order to prevent the unreasonable degradation of properties, stream channels, waters, and other natural resources.

## What is a Stormwater Pollution Prevention Plan (SWPPP)?

A SWPPP is a document that is prepared in accordance with good engineering practices and that identifies potential sources of pollutants that may reasonably be expected to affect the quality of stormwater discharges. A SWPPP required under a VSMP for construction activities shall identify and require the implementation of control measures, and shall include, but not be limited to the inclusion of, or the incorporation by reference of an approved erosion and sediment control plan, an approved stormwater management plan, and a pollution prevention plan.

## What is included in a SWPPP?

The SWPPP outlines the steps and techniques the operator will take to comply with the terms and conditions of the permit, including water quality and quantity requirements that are consistent with the VSMP permit regulations, to reduce pollutants in the stormwater runoff from the construction site. The SWPPP also specifies all potential pollutant sources that could enter stormwater leaving the construction site and covers methods used to reduce pollutants in stormwater runoff during and after construction.

A complete list of SWPPP requirements is contained in Part II of the general permit.

The SWPPP is to be retained at the construction site along with a copy of the general permit and general permit coverage letter. The operator has the lead in developing, implementing and maintaining the SWPPP and committing the resources necessary to prevent pollution. Random site inspections for compliance with the general permit, including SWPPP review, may be conducted by VSMP Authority or DEQ staff.

## How do I apply for a CGP?

To apply for a CGP, an application must be submitted in person at the Environmental Services Bureau office. The application is available on the City's webpage ([www.norfolk.gov](http://www.norfolk.gov)): Departments >> Planning >> Environmental Services >> Erosion and Sediment Control.

In addition to the application, please bring the following, if applicable:

- The SWPPP documents for the construction activity
- Responsible Land Disturber Notification.

You may contact the Bureau of Environmental Services: 757-664-4363, or visit our office: 810 Union St, Suite 508, Norfolk, VA 23510.