



SURVEY MONUMENT MAPPER

Welcome to the City of Norfolk's Survey Monuments Mapper Application. The purpose of this web application is to provide the public with 24-hour access to information about survey control monuments located in the City of Norfolk.

Description


The Monuments in the Survey Monument Mapper are permanently placed survey markers, brass disks set in concrete with a known position and/or elevation, which provide the horizontal and vertical control for land surveying. With this application you will be able to do the following:

- Determine the location and elevation of monuments
- Reference a detailed recovery sketch

Instructions

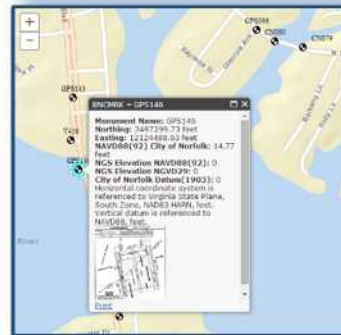
To begin accessing monument information from the mapper, please follow these instructions:

1. Navigate to the particular location of the monument you are interested in on the map.

- a. Click the zoom buttons  on the upper left side of the page, or
- b. Scroll using a computer mouse wheel to zoom in or out and hold down the left mouse button to move around on the map.



2. Click on the monument symbol to open a pop-up with detailed information about the particular monument.



3. Click the word [Print](#) at the bottom of the pop-up to open a new window with the recovery sketch and the monument's detailed information. You can then print from the internet browser to your local printer.

