



OPTION 1  
SEE "AIR VENT  
ASSEMBLY" WS\_03  
(NOTE CONNECTION  
BETWEEN CASING AND  
CARRIER PIPE)

2" BRASS  
PIPE  
1" PRE-MOLDED  
FIBER CAULKING  
BETWEEN PIPE  
AND BRICK

NEOPRENE  
END SEAL OR 8"  
BRICK TO SEAL  
ANNULAR SPACE  
AT CASING ENDS. IF  
BRICK, COAT  
SURFACE WITH  
BITUMASTIC

CL DRAINAGE  
DITCH

STEEL CASING  
(FOR LENGTH SEE  
CONTRACT DOCUMENTS)

FINISH  
GRADE

OPTION 2  
2" STAINLESS  
STEEL PIPE

CL DRAINAGE  
DITCH

BRICK AND MORTAR  
CAP 4" MIN. THICKNESS

BIRD  
SCREEN

SEE NOTE 4

2'-0" 6"

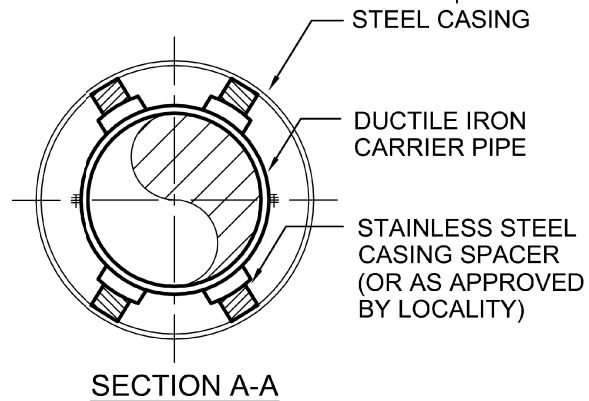
STAINLESS STEEL  
CASING SPACER  
(OR AS APPROVED  
BY LOCALITY)

SECTION

DUCTILE IRON  
CARRIER PIPE

RESTRAINED  
MECHANICAL  
JOINT (TYP)

6" 2'-0"



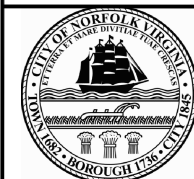
SEE WS\_04, SHEET 2 OF 2 FOR NOTES.

## STEEL CASING DETAIL

NOT TO SCALE

### CITY OF NORFOLK MODIFICATION

1. DELETE AIR VENT ASSEMBLY CALLOUT TEXT "OPTION 1 SEE "AIR VENT ASSEMBLY" WS\_03 (NOTE CONNECTION BETWEEN CASING AND CARRIER PIPE)". REPLACE WITH SEE NORFOLK STANDARD LEAK DETECTOR DETAIL.



DATE: 03/18

CITY OF NORFOLK – DEPARTMENT OF UTILITIES  
STANDARD DETAILS

STEEL CASING DETAIL

SCALE:  
NOT TO SCALE

DRAWING NO.  
WS-04-1-NM

REFERENCE  
200,801-804

CATEGORY  
WATER & SANITARY

DATE  
6/16

SHEET No.  
1 OF 2

DETAIL No.  
WS\_04