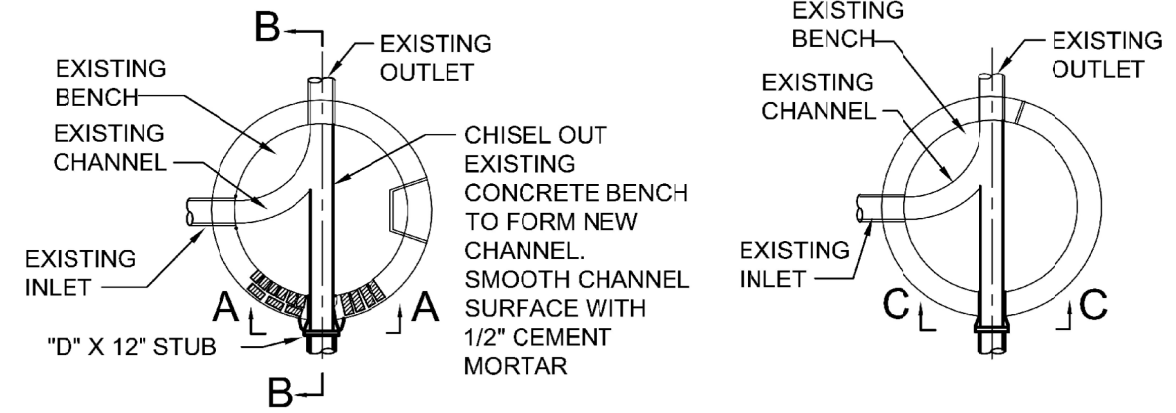


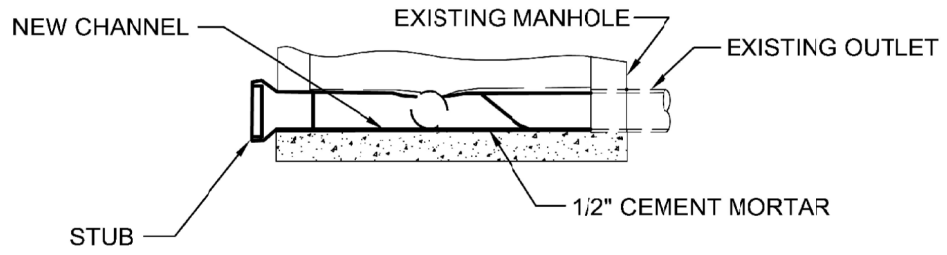
SECTION A-A

SECTION C-C



BASE PLAN OF BRICK MANHOLE

BASE PLAN OF PRE-CAST MANHOLE



SECTION B-B

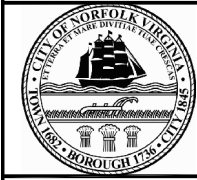
CONNECTION INTO EXISTING MANHOLES

NOT TO SCALE

CITY OF NORFOLK MODIFICATION

1. FOR BASE PLAN OF BRICK MANHOLE DELETE THE "D" X 12" STUB" DIMENSION AND REPLACE WITH "FOR ANY SIZE PIPE DIAMETER STUB OUT, THE MINIMUM LENGTH SHALL BE 5' FROM THE FACE OF THE OUTSIDE MANHOLE WALL".

REFERENCE 200,802	CATEGORY SANITARY SYSTEMS	DATE 6/16	SHEET No. 1 OF 1	DETAIL No. SS_08
----------------------	------------------------------	--------------	---------------------	---------------------



DATE: 03/18

CITY OF NORFOLK – DEPARTMENT OF UTILITIES
STANDARD DETAILS

SCALE:
NOT TO SCALE

CONNECTION INTO EXISTING MANHOLE

DRAWING NO.
SS-08-NM