

SHELTON AVE

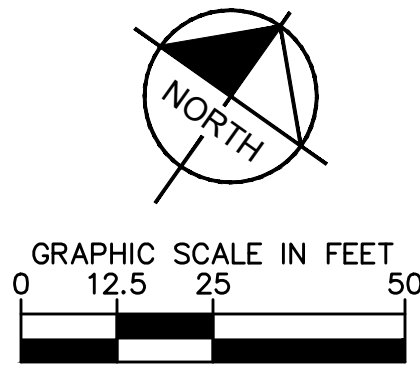
HALSTEAD AVE

FLEETWOOD AVE

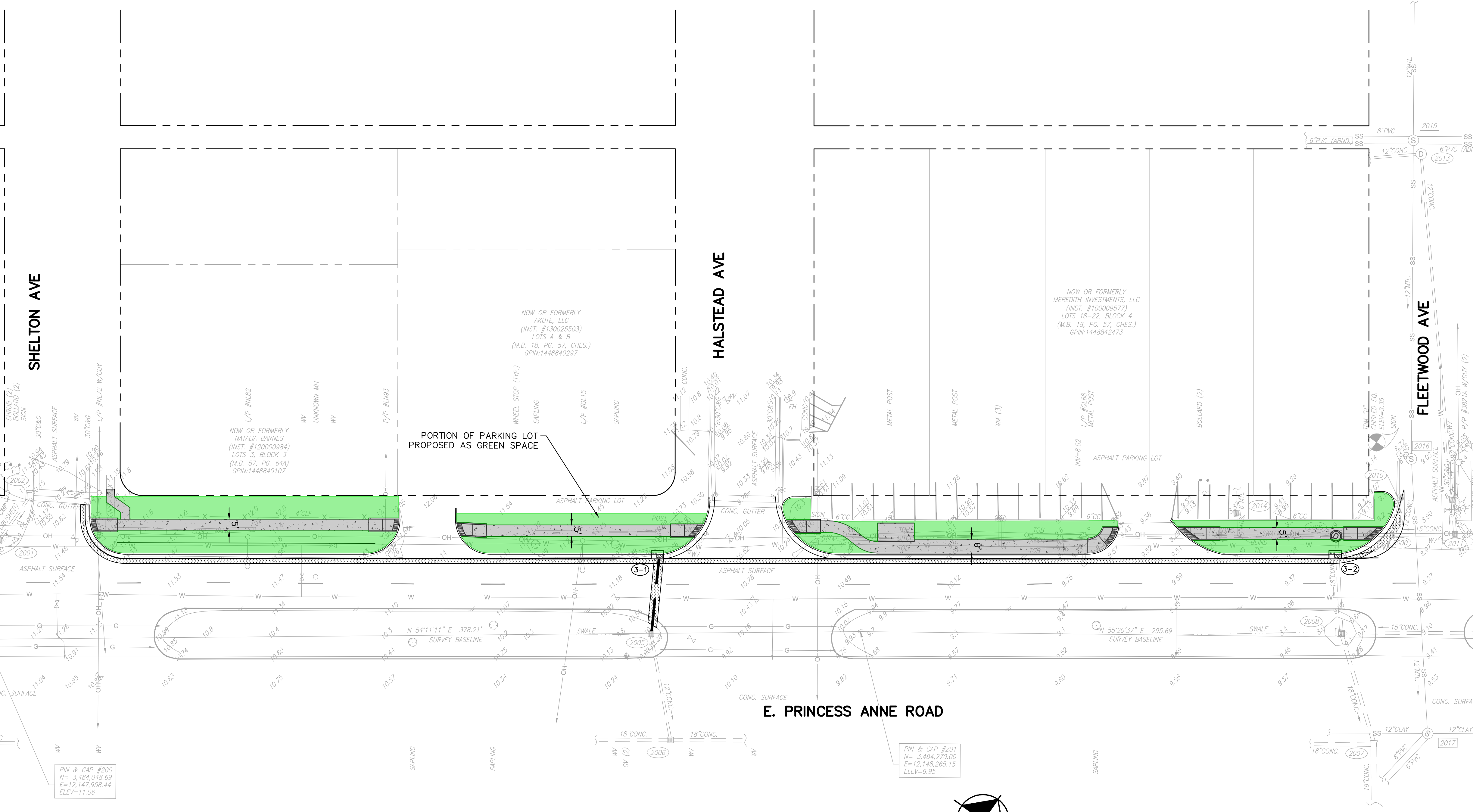
E. PRINCESS ANNE ROAD

LEGEND

- GREEN SPACE
- PROPOSED SIDEWALK



Kimley»Horn



NOW OR FORMERLY  
NATALIA BARNES  
(INST. #12000984)  
LOTS 3, BLOCK 3  
(M.B. 57, PG. 644)  
GPIN:1448840107

NOW OR FORMERLY  
AKUTE, LLC  
(INST. #130025503)  
LOTS A & B  
(M.B. 18, PG. 57, CHES.)  
GPIN:1448840297

NOW OR FORMERLY  
MEREDITH INVESTMENTS, LLC  
(INST. #100009577)  
LOTS 18-22, BLOCK 4  
(M.B. 18, PG. 57, CHES.)  
GPIN:1448842473

PIN & CAP #200  
N= 3,484,048.69  
E=12,147,958.44  
ELEV=11.06

PIN & CAP #201  
N= 3,484,270.00  
E=12,148,265.15  
ELEV=9.95

PORTION OF PARKING LOT  
PROPOSED AS GREEN SPACE

ASPHALT PARKING LOT